



**298. FRENCH BURLWOOD MARQUETRY INLAID DECANTER CADDY, late 19<sup>th</sup> Century**, ormolu fitted interior with four blown, etched and gilded decanters and four conforming stems. Height 11 in. Width 13 in. Depth 9 ¾ in.



**299. PAINTING, CITY PROMENADE, HEINRICH HERMANNS (GERMAN 1862-1942 )**, oil on board, signed lower left "H. H.," inscribed on mat "*Zur...au Baden-Baden (Aug. 05) and Dusseldorf (June 07). H. Hermanns.*" 5 in. x 7 ¼ in.



**300. SHIPWRIGHT'S HALF HULL MODEL OF A PINKY, 2<sup>nd</sup> half of the 19<sup>th</sup> Century, built in lifts. Height 5 in. Length 32 ¼ in.**

**301. HALF MODEL OF THE U.S. ARMY FREIGHT AND PASSENGER VESSEL *T.P. - 66*, built by Pierce and Kilburn, Fairhaven, Mass., 1942. 11 in. x 40 ½ in. (plaque)**

**302. SHIPWRIGHT'S HALF HULL MODEL OF A DOWN-EASTER, late 19<sup>th</sup> Century, built in lifts. Plaque: 13 ¾ in. x 63 ½ in.**



**303. COLORED LITHOGRAPH, *TOWN AND HARBOUR OF APIA ON THE ISLAND OF UPOLU, NAVIGATOR GROUP SOUTH PACIFIC*, 19<sup>th</sup> Century, lithograph illustration v. Charles Fuchs, Hamburg. 14 ¾ in. x 23 in.**



**304. ENGRAVED WHALE TOOTH, 19<sup>th</sup> Century**, deeply etched view of sailor's wife gazing through curtain; the reverse with an American Tar on a beach, above a sperm whale. Height 6 ½ in.

**305. PAIR OF BRASS SPERM WHALE ANDIRONS, early 20<sup>th</sup> Century**, with whale ship log-stops. Height 19 ½ in.



**306. SHIPWRIGHT'S HALF HULL MODEL OF A J-BOAT, late 19<sup>th</sup> Century**, built in lifts and mounted on plaque, inscribed on reverse "*Presented to George Jepson, 1898, by his friend and co-worker John Laurence Frisbie, Naval Architect.*" Height 8 in. Width 31 in.

**307. SHIPWRIGHT'S HALF HULL MODEL OF THE CLARETTA, late 19<sup>th</sup> or early 20<sup>th</sup> Century**, built in lifts, with applied quarterboard inscribed *Claretta*, and mounted on backboard. Height 7 ¼ in. Width 51 ¼ in.



**308. FRENCH CARVED PINE BUFFET, 19<sup>th</sup> Century**, in two sections. Height 89 ½ in. Width 56 ¾ in. Depth 20 ½ in.

**309. VINTAGE KASHAN CARPET.** 8 ft. 8 in. x 12 ft.



**310. PAIR OF ROYAL VIENNA CLASSICAL DECORATED CABINET PLATES, 19<sup>th</sup> Century**, entitled *Callipso* and *Die drei Gracien (The Three Graces)*. Diameter 9 ¾ in.



**311. PAINTING, *PORTRAIT OF YOUNG WOMAN*, ATTRIBUTED TO FANFANI, (ITALIAN 19<sup>th</sup> Century). 39 ¼ in. x 29 ½ in.**



**312. BIEDERMEIER MAHOGANY MARBLE-TOP CHEST, circa 1830, with blind drawer over three graduated drawers. Height 37 ¼ in. Width 35 ¾ in. Depth 16 ¼ in.**



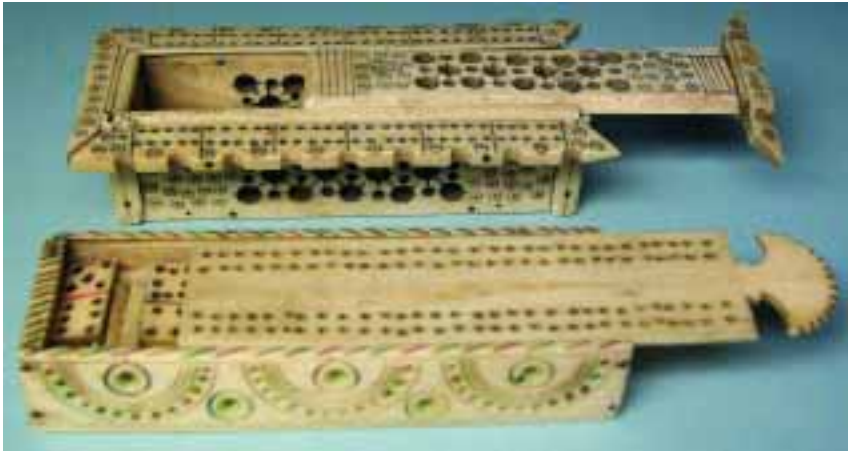
**313. MASONIC MAPLE INLAID JEWEL BOX, 19<sup>th</sup> Century**, with whale ivory, whalebone and tropic wood pinwheel and fan inlay, brass stars and nickel Masonic devices. Height 3 ¼ in. Width 9 ¾ in. Depth 6 ¼ in.

**314. IVORY MOUNTED AND GRAIN PAINTED KEEPSAKE BOX, 19<sup>th</sup> Century**, with tintype miniature portrait of girl on lid. Height 2 ½ in. Length 7 ¼ in. Width 3 ¾ in.



**315. ENGRAVED PANBONE, 19<sup>th</sup> Century**, whalebone plaque with British ship. 6 ½ in. x 11 in.

**316. PAIR OF ENGRAVED WHALE TEETH, 19<sup>th</sup> Century**, pin-prick engraving of dapper gentleman and risqué woman. Height 3 in.



**317. PRISONER-OF-WAR BONE GAME BOX, circa 1800**, scribed and pierced box with sliding lid flanked by cribbage board containing 21 dominoes and 3 miniature dice. Height 1 in. Length 5 in. Width 2 in.

**318. PRISONER-OF-WAR BONE GAME BOX, circa 1800**, scribed and polychromed box with cribbage board lid and 42 dominoes. Height 1 in. Length 4 ½ in. Width 1 ½ in.



**319. ENGRAVED WHALE TOOTH, 19<sup>th</sup> Century**, naval seaman with spyglass on one side, American ship, four cannon on the reverse. Length 5 ¾ in.

**320. ENGRAVED WHALE TOOTH, 19<sup>th</sup> Century**, pin-pricked and polychromed depiction of dapper young man, inscribed on reverse, "50 bbls." 5 ¾ in.



**321. GEORGE III MAHOGANY INLAID BEDSIDE COMMODOE, circa 1770, with paneled door above drawer. Height 28  $\frac{3}{4}$  in. Width 21  $\frac{3}{4}$  in. Depth 19 in.**



**322. PAINTING, *NEW MOON AFTER RAIN*, FELIX RUSSMAN, (AMERICAN BORN 1888), oil on panel, unsigned, old gallery label on reverse with title and name, in period frame. 8 in. x 11 in.**



**323. BELGAIN TAPESTRY FRAGMENT FEATURING THREE YOUTHS AND AN OWL AMONGST FOLIAGE, 18<sup>th</sup> Century**, mounted in 19<sup>th</sup> Century carved walnut fire screen. Height 38 in. Width 31 in. - overall.



**324. PAINTING, *COUNTRY LANDSCAPE*, E. GULLINNY, 19<sup>th</sup> Century**, oil on canvas, signed lower right. 18 ¼ in. x 25 in.



**325. PAIR OF ANTIQUE RUSSIAN 84 SILVER REPOUSSE STERLING CANDLESTICKS**, marked tt 1869, 84. Height 13  $\frac{3}{4}$  in.

**326. WELLINGTON MAHOGANY LOCKSIDE CHEST**, circa 1870's. Height 48 in. Width 21  $\frac{1}{4}$  in. Depth 15 in.

**327. PAIR OF ITALIAN CARVED AND DECORATED TORCHERES**, 20<sup>th</sup> Century. Height 50  $\frac{1}{4}$  in.



**328. PAIR OF PAINTINGS, *DUTCH COASTAL SCENES*, CHARLES HENRY JOSEPH LEICKERT (BELGIAN 1818-1907), oil on panel, signed lower right, Ch. Leickert. 7 ¼ in. x 10 ¼ in.**

**329. VINTAGE SAROUK CARPET. 8 ft. 10 in. x 11 ft. 7 in.**



**330. LITHOGRAPH, *YOUNG LINCOLN*, NORMAN ROCKWELL (AMERICAN 1894-1978)**, artist's proof of 15 color lithograph in limited edition of 260, signed in pencil lower right and accompanied by original folio, and hand-signed letter from Norman Rockwell dated Sept 28, 1976. 30 in. x 16 in.



**331. PAINTING, *PORTRAIT OF GENTLEMAN WITH SPANIEL*, 19<sup>th</sup> Century**, unsigned. 36 in. x 25 ¼ in.



**332. ART NOUVEAU POLYCHROMED WHITE METAL SCULPTURE OF YOUNG GIRL *CHANT A LA PRAIRIE*, by CHARLES PERRON, mounted as a lamp. Height 30 in.**

**333. ART NOUVEAU POLYCHROMED WHITE METAL SCULPTURE ENTITLED *JEUNESSE*, signed A.J. Scotte, electrified early in 20<sup>th</sup> Century. Height 29 in.**



**334. SILK EMBROIDERED PICTURE OF WOMAN FEEDING SHEEP IN A LANDSCAPE, ENGLISH, early 19<sup>th</sup> Century, silk thread on silk panel, in period frame. 12 ½ in. x 9 ¾ in.**



**335. NEEDLEWORK EMBROIDERY, 19<sup>th</sup> Century, wool on silk panel with painted heads and limbs. 13 ¾ in. x 10 ¾ in.**



**336. WHALE IVORY SEALING WAX STAMP, 19<sup>th</sup> Century**, in form of cotten pin, inscribed *K.M.* Length 4  $\frac{1}{4}$  in.

**337. SAILOR'S IVORY INLAID DITTY BOX, 19<sup>th</sup> Century**, hinged box with one drawer, ivory and ebony inlaid plaque and trim, applied ivory knobs. Height 7 in. Width 14  $\frac{3}{4}$  in. Depth 9  $\frac{1}{4}$  in.

**338. WHALE IVORY AND BONE CANE, 19<sup>th</sup> Century**, ivory handle and baleen spacer on bone shaft. Length 31  $\frac{1}{4}$  in.

**339. SAILOR'S COCONUT SHELL DIPPER, 19<sup>th</sup> Century**, whale ivory, bone, and ebony handle. Length 14  $\frac{1}{2}$  in.



**340. WATERCOLOR, PANORAMIC VIEW OF MAINZ, MID 19<sup>th</sup> Century**, watercolor on paper, unsigned. Retains gallery label of *Joseph Korner Glasermeister, Mainz*. 16 ½ in. x 24 in.



**341. WHALEBONE FID, 19<sup>th</sup> Century.** Length 12 ½ in.

**342. MINIATURE CARVING OF AN EIGHT-MAN WHALEBOAT, late 19<sup>th</sup> or early 20<sup>th</sup> Century**, with articulated figures in case. Length 9 in.  
Provenance: Barbara Johnson Whaling Collection, Rafael Osona Auction, August 14, 1993, lot 121.



**343. PAIR OF WHALE IVORY AND BONE KNITTING NEEDLES, 19<sup>th</sup> Century**, ivory clenched fist above ivory and mahogany spacers on bone shafts. Length 12 in.

**344. SCULPTURE OF A NATIVE AMERICAN MAN, H. AMES JR., 1912**, plaster with applied wood feather and braids, signed on reverse. Height 29 ½ in. Width 22 in. Depth 10 ½ in.



**345. AMERICAN CAST IRON GIRANDOLE MIRRORED WATCH HOLDER, 19<sup>th</sup> Century**, in original polychromed surface. Height 19 ¼ in. Width 14 ¼ in.



**346. GERMAN PINWORK OF MAN WITH STEIN, 18<sup>th</sup> Century**, watercolor and punched decoration on laid paper. 12 ¼ in x 8 ¼ in.