



177. NEST OF SIX MITCHY RAY (1880 - 1956) OVAL SWING HANDLE NANTUCKET BASKETS, circa 1930's, ranging in size: Height 4 ¼ to 8 inches. Length 9 to 15 ½ inches.



178. PAINTING, *PORTRAIT OF THE SIDE-WHEELER NANTUCKET*, WILLIAM R. DAVIS (AMERICAN B. 1952), oil on canvas, signed lower right, William R. Davis A.S.M.A., dated on plaque 1986. 26 ¼ in. x 42 in.



179. PRISONER-OF-WAR MINIATURE BONE MODEL OF A SHIP-OF-THE-LINE, circa 1800, a triple-decker with seventy guns, mounted on engraved bone base. Height 3 $\frac{3}{4}$ in. Length 4 $\frac{3}{4}$ in.



180. GEORGIAN OAK PETITE SLANT FRONT DESK, 2nd half of the 18th Century, with hidden compartment beneath writing surface. Height 35 $\frac{1}{2}$ in. Width 30 in. Depth 17 $\frac{3}{4}$ in.



180a. RARE BOOK WITH WHALING FORE-EDGE VIEW, Montgomery James, "The Poetical Works of James Montgomery, Edinburgh, 1860.



181. FRENCH PROVINCIAL CARVED OAK ARMOIRE, late 18th Century.
Height 97 in. Width 63 ½ in. Depth 23 ¼ in.

182. GORHAM STERLING EMBOSSED FOOTED TRAY, stamped HVG; made for Spaulding & Co., Chicago, 1904. Length 21 in. Width 15 ¾ in.



183. SEVRES CHATEAU DE FONTENBLEAU PORCELAIN 80 PIECE PARTIAL DINNER SERVICE, 19th CENTURY, comprising 14 dessert plates, 14 soup bowls, 12 demitasse cups and saucers, 11 coffee cups and saucers, and 6 tea cups and saucers, marked 1846.



184. WATERCOLOR, VIEW OF MAINZ, CONTINENTAL SCHOOL, early to mid 19th Century, watercolor on paper, unsigned, in period frame. 14 ½ in. x 21 ¾ in.



185. PAIR OF LOUIS XVI STYLE CARVED AND UPHOLSTERED, FAUTEUILS, 19th Century. Height 35 $\frac{3}{4}$ in.



186. PRISONER-OF-WAR BONE GAME BOX, circa 1800, domed hinged lid with pierced initials "G R," over thin slide exposing concave cribbage board, 45 dominoes and 3 dice. Height 3 in. Length 7 in. Width 2 $\frac{3}{4}$ in.



187. PAINTING, *NON-COMMISSIONED OFFICER*, FREDERIC S. REMINGTON (AMERICAN 1861-1909), watercolor on paper, signed lower right, Frederic Remington, retaining label from the J.N. Bartfield Galleries, 30 West 57th Street, New York. Sight: 15 in. x 7 ½ in.



188. PAINTING, AN ARAB ON HORSEBACK, FREDERIC S. REMINGTON (AMERICAN 1861-1909), gouache on paper, signed lower right, Frederic Remington, Algier. Sight: 21 ½ in. x 18 ½ in.



189. AMERICAN EMPIRE CARVED MAHOGANY SETTEE, circa 1830s.
Height 34 in. Width 91 ½ in.





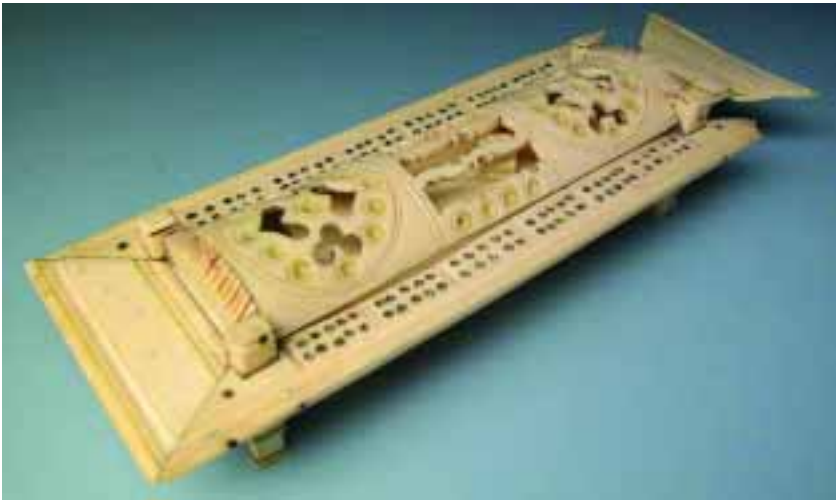
190. PAINTING, *PORTRAIT OF YOUNG BROTHERS, CONNECTICUT RIVER VALLEY*, 19th Century, oil on canvas, unsigned, in period frame. 33 ½ in. x 27 ¼ in.



191. PEARLWARE SOFT PASTE RETICULATED BASKET AND UNDER-PLATE, circa 1830, with blue and white transfer *Indian Pavillion* decoration within floral and diaper border. Basket: Height 3 ¼ in. Length 9 ½ in. Width 7 in. Underplate: Length 10 in. Width 7 ½ in.



192. PRISONER-OF-WAR BONE SPINNING JENNY, circa 1800, carved and mechanized group of three female figures at two-tiered spinning wheel. Height 5 ¼ in. Width 3 in. Depth 1 ½ in.



193. PRISONER-OF-WAR BONE GAME BOX, circa 1800, pierced dome lid flanked by cribbage board, over thin slide exposing 55 dominoes and 3 dice. Height 2 ¼ in. Length 9 ½ in. Width 3 ¼ in.



194. PRISONER-OF-WAR BONE POCKET WATCH TOWER, circa 1800, ebonized and bone mounted hutch with female figure, accompanied with a 19th Century French silver watch. Height 9 $\frac{3}{4}$ in. Width 5 $\frac{1}{2}$ in. Depth 3 in.



195. PRISONER-OF-WAR BONE GAME BOX, circa 1800, scribed box with cribbage board on domed lid, exposing 42 dominoes and 3 miniature dice. Height 3 in. Length 8 in. Width 3 $\frac{3}{4}$ in.



196. FRENCH PRISONER-OF-WAR BONE-MOUNTED MIRROR, 19th Century, carved bone appliqué cherubs, dragons and crest inscribed, "SGOTORUM." 33 in. x 20 ¼ in.



197. PRISONER-OF-WAR BONE GAME BOX, circa 1800, scribed and polychromed box with two domed lids and polychromed slides depicting centurions, with 64 dominoes and 2 dice. Height 4 ¼ in. Length 6 ½ in. Width 4 in.



198. PAINTINGS, *ENGLISH LANDSCAPES*, circa 1840, four English landscape oils on canvas in their original gilt frames. 19 ¼ in. x 25 ½ in.



199. SET OF FOUR SHEFFIELD PLATED GADROONED HURRICANE CANDLESTICKS BY MAPPIN BROTHERS, circa 1850. Height 11 ½ in.



200. GEORGE III MAHOGANY INLAID HANGING CORNER CUPBOARD, 18th Century, replaced backboards. Height 48 $\frac{1}{4}$ in. Width 28 $\frac{1}{2}$ in. Depth 18 $\frac{1}{4}$ in.

201. PAIR OF CHINESE CARVED WOOD HIGH OFFICIALS, circa 1600's. Height 13 in.



202. CANTON BLUE AND WHITE RETICULATED CHESTNUT BASKET, 19th Century.

203. CHINESE EXPORT BLUE AND WHITE PLATTER, 18th Century, with delicate hand painted central floral wreath cartouche.

204. PETITE CANTON BLUE AND WHITE TEAPOT, 19th Century.



205. SET OF FOUR GOTHIC REVIVAL ELMWOOD SIDE CHAIRS, late 19th Century, accompanied by a conforming 20th Century armchair.



206. PAINTING, *PEASANTS MERRYMAKING OUTSIDE AN INN*, PIETER DE BLOOT (DUTCH 1602-1658), 17th Century, oil on panel, unsigned, letter of description on reverse, and paper label from House of Heydenryk, N.Y. 7 ¼ in. x 5 ¾ in.

207. PAINTING, *PORTRAIT OF ANNA MARIA ROSSLER, KIEBLER*, circa 1825, oil on canvas, inscribed on stretcher, "Anna Maria Rossler, geb kal_ 1803-1827...des Alois Rossler..." Signed lower right "Kiebler, 1825." 26 in. x 21 in.



208. PAINTING, *STILL LIFE WITH GRAPE VINES*, AMERICAN, 19th Century, oil on canvas, unsigned. 30 ½ in. x 25 in.



209. GEORGE III MAHOGANY INLAID SIDEBOARD, circa 1780. Height 35 ½ in. Width 67 in. Depth 29 ¼ in.