



**31. FRENCH PROVINCIAL CHERRY WOOD BONNETIERE** , circa 1829, single double panel door with steel hinge and 28" scroll and pierced escutcheon. Height 84 ½ in. Width 48 ½ in. Depth 27 ½ in.



**32. SCRIMSHAW PANBONE**, 19th Century, engraved with a British clipper ship. 6 ½ in. x 9 ½ in.



**33. ENGLISH SAMPLER, Ann Hutton, circa 1820, in period mahogany frame.**  
16 ¼ in. x 12 ¼ in.



**34. WILLIAM APPLETON NANTUCKET SEWING BASKET, circa 1900, carved heart handles and multi-turned and scribed circle rosewood base.**  
3 ½ in. x 9 ½ in.



**35. ENGLISH SAMPLER**, Ann Mitchell, her work at the age of 13, 1794, in period walnut frame. 16 ¼ in. x 12 ¼ in.



**36. NANTUCKET LIGHTSHIP ROUND OPEN SEWING BASKET**, last quarter of the 19th Century, with two heart shaped handles, multiple concentric circles in the base. Height 4 in. Diameter 11 ¼ in.





**37. FRENCH LOUIS PHILIPPE BURLWOOD BUFFET, circa 1880.**  
Height 39 ½ in. Width 52 in. Depth 20 ½ in.



**38. PAINTING, *THE ARTISAN'S COURTYARD*, R. ROBERTI (ITALIAN 19th Century),** watercolor on paper, signed lower right R. Roberti, matted and framed in carved 22k gold leaf frame. 10 ½ in. x 15 ½ in.



**39. CONTINENTAL GILT MIRROR, circa 1820**, surmounted eagle with wreaths and fruit. 26 ½ in. x 23 ¾ in.

**40. ENGLISH MAHOGANY KNIFE BOX, 19th Century**, crossbanded and herringbone inlaid with large satinwood inlaid shell, and Sheffield silver shield escutcheon. Height 13 ¾ in. Width 9 in. Depth 11 in.



**41. GEORGE III MAHOGANY BRASS BOUND CELLARET, circa 1790**, on stand with original tin liner. Height 23 ½ in. Width 24 in. Depth 17 ½ in.



**42. PAINTING, *PORTRAIT OF THREE SISTERS*, FRIDOLIN SCHLEGEL (AMERICAN, 19th Century),** oil on canvas, monogrammed mid left, inscribed on reverse F. Schlegel, pinx 1859. 25 in. x 30 in. oval.



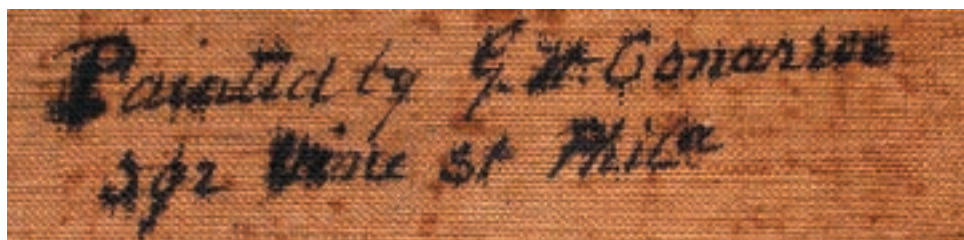
**43. PAINTING, *FRUIT STILL LIFE*, ANDREW JOHN HENRY WAY (BALTIMORE 1826-1888),** oil on board, signed lower right A.J.H. Way. 12 in. x 15 ¼ in.

Way, born in Washington D.C. studied art in Cincinnati under John Peter Frankenstein and in Baltimore with Alfred Jacob Miller; Continued his education in Paris and at the Academia De Belle Arte in Florence; He was an enormously popular artist of his day, commanding as much as \$1,000 for his still lifes at the time.



**44. PAINTING, *YOUNG GIRL HOLDING BASKET OF FLOWERS*, GEORGE WASHINGTON CONARROE (AMERICAN 1803-1882), signed on the reverse of canvas "Painted by G.W. Conarroe, 592 Main St. Phila". 34 1/8 in. x 27 1/8 in.**

Conarroe began exhibiting in Philadelphia in 1829. His works are in the following collections: Smith College Museum of Art, Brooklyn Museum of Art, Pennsylvania Academy of the Fine Arts, Telfair Museum of Art, Maryland Historical Society.







**45. THE GENERAL JACOB GOULD, NEW YORK NEOCLASSICAL MAHOGANY VENEERED CHERRY-WOOD SIDEBOARD, circa 1825.** The sideboard originally shipped up the Erie Canal from New York to Rochester in 1825, and descended in a direct line from General Jacob Gould. See biography in drawer. Height 61 ½ in. Width 55 in. Depth 22 ½ in.



**46. PAINTING, *PORTRAIT OF AN AMERICAN CLIPPER SHIP*, (AMERICAN), circa 1825,** oil on board portrays clipper ship anchored offshore with a side-wheeler pulling away. 6 ½ in. x 9 ½ in.





**47. PAINTING, *SCHOONER OFF BRANT POINT*, EDGAR H. JENNY (AMERICAN 1869-1939),** watercolor on paper, signed lower right "To Dear Adelaide Jr., Edgar H. Jenney, Oct. 1932". 13 in. x 19 in.

Jenny studied art with Ernest Lee Major at the Boston School of Fine Arts, and continued his studies in Paris.



**48. NANTUCKET OVAL SWING HANDLE BASKET, circa 1885,** rattan woven with a broad rim, old 19th C. brass reinforcement to repair the swing handle. Height 6 in. Length 14 in. Width 10 in.



**49. SET OF EIGHT ENGLISH REGENCY ROSEWOOD DINING CHAIRS, circa 1820-30, with leather slip seats, detailed back rail and delicate carved legs.**

**50. CHINESE EXPORT PORCELAIN ROSE MEDALLION UMBRELLA STAND, circa 1890.**



**51. PAINTING, *SAILOR'S FAREWELL*, FRENCH, 1st Quarter of the 19th Century, oil on canvas, in period gilt frame. Diameter 11 ½ in.**



**52. ENGLISH SOLDIER REGIMENTAL WOOLIE, circa 1880**, British flag curtain swags framing a wreath of ten flags with portrait cards, in period maple frame. 19 in. x 22 ½ in.



**53. ENGLISH SAILOR WOOLIE, circa 1805-1810**, portrait of the ship Trafalgar in period maple frame. 15 in. x 22 in.



**54. SCARCE AMERICAN CHERRY SEVEN-DRAWER TALL CHEST, 18th Century.** Height 60 ½ in. Width 42 ¼ in. Depth 20 in.



**55. LAMINATED SHIP'S RIGHT HALF HULL, circa 1850.** Height 17 in. Length 90 in. Depth 8 in.





**56. PAINTING, *NANTUCKET BOAT BASIN*, ANNE RAMSDELL CONGDON (AMERICAN 1873-1958)**, signed lower left Anne Congdon, 1936, and inscribed in pencil on reverse, Nantucket. 8 in. x 9 ½ in.



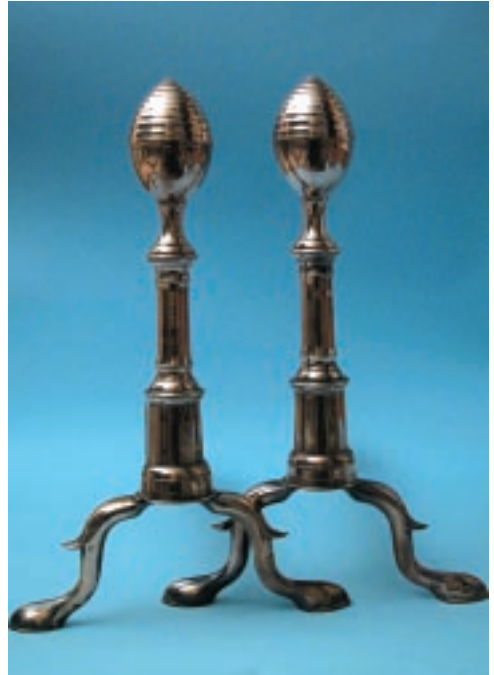
**57. NANTUCKET LIGHTSHIP ROUND OPEN SWING HANDLE BASKET, last quarter of the 19th Century**, lollipop swing handle with multiple concentric circles in the base. Height 4 ¾ in. Diameter 11 in.

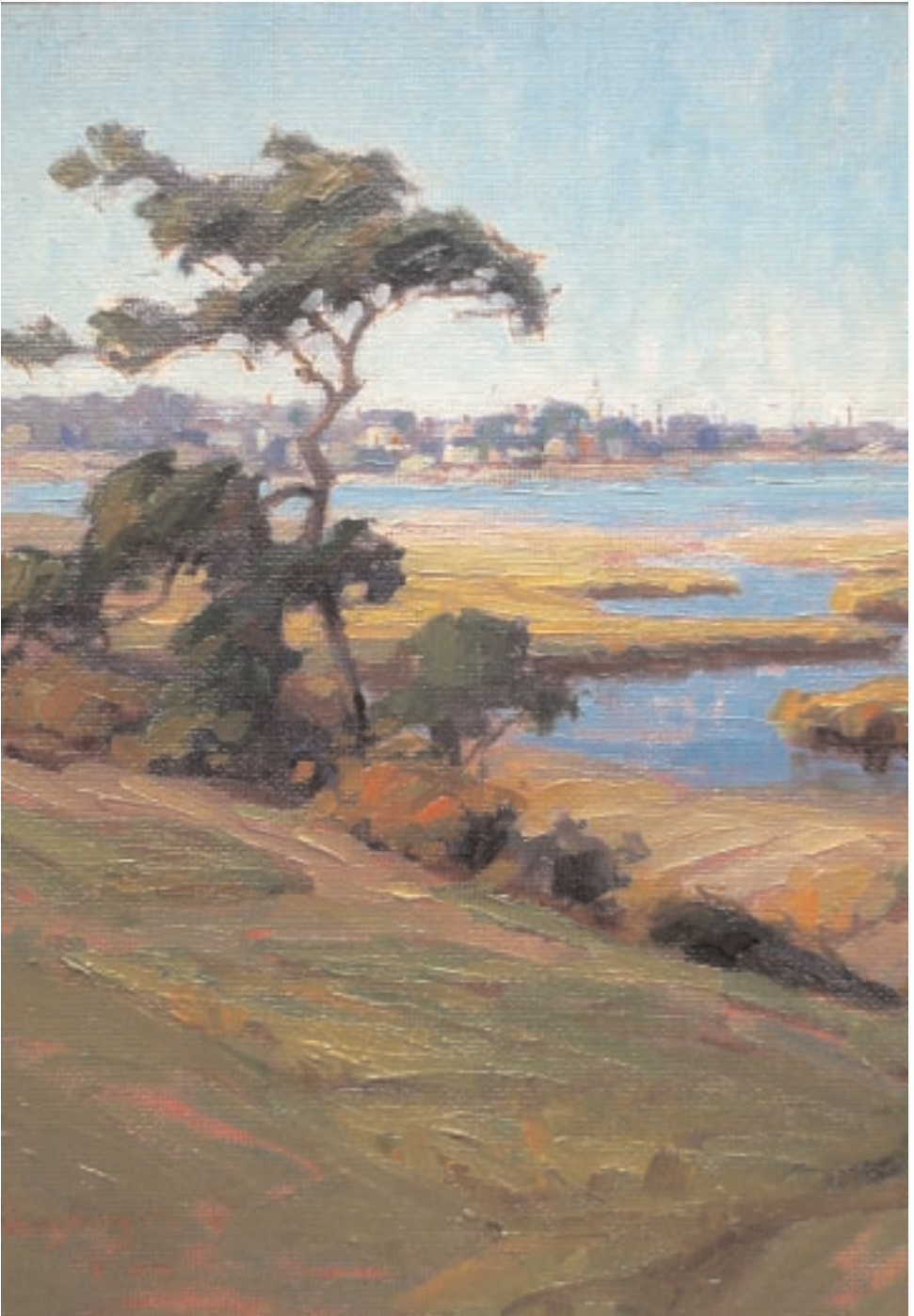


**58. CENTENNIAL CHIPPENDALE CARVED MAHOGANY BLOCK FRONT KNEEHOLE DESK, circa 1860-70**, raised on claw and ball feet with carved shells on knees, original Sypher & Company, New York label. Height 31 in. Width 38 in. Depth 20 ½ in.



**59. PAIR OF BELL METAL LEMON TOP ANDIRONS, circa 1800**, Philadelphia or Baltimore, unusual feature of ribbing on the top. Height 17 in.





**60. PAINTING, *VIEW OF THE TOWN OF NANTUCKET FROM MONOMOY*, ANNE CONGDON (AMERICAN 1873-1958), oil on masonite, signed lower left Anne Congdon, 1936. 18 in. x 14 in.**





**61. PAIR OF CHINESE EXPORT FAMILLE VERDE FOOTED FRUIT PLATTERS, circa 1830.**



**62. FINE REGENCY INLAID ROSEWOOD DROP LEAF SOFA TABLE, 1st quarter of the 19th Century, with slide out game-board in top, revealing a well with leather fitted backgammon board, four sabre legs ending in brass casters. Height 28 ½ in. Width 38 in. or 60 in. extended, Depth 26 in.**