



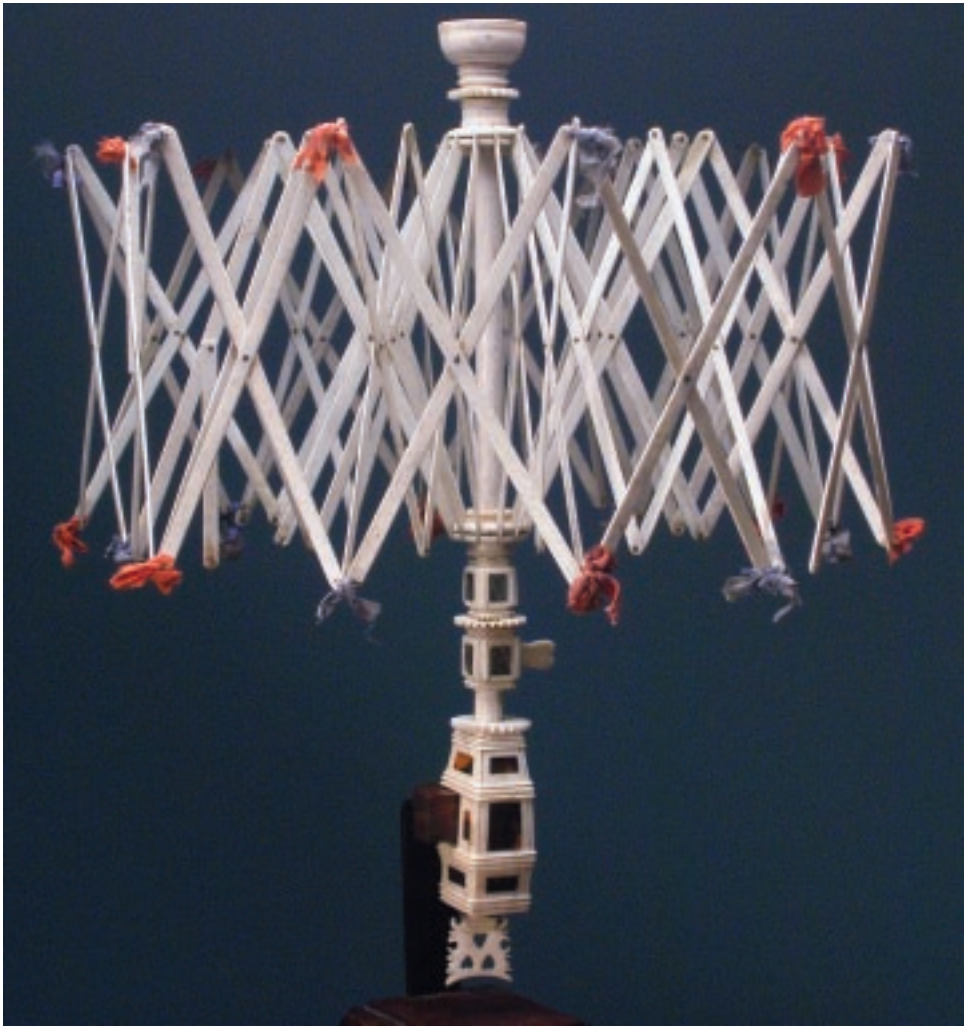
63. PAINTING, *PLUMB LANE, NANTUCKET*, ANNE RAMSDELL CONGDON (AMERICAN 1873-1958), oil on masonite, signed lower right Anne Congdon, 1936. 22 in. x 18 in.



64. FINE PAIR OF CHINA TRADE PORTRAITS OF THE SHIP *CITY OF SYDNEY*, circa 1875, oils on artist board; The City of Sydney was built by John Roach & Son, Ship Builders in Chester, Pennsylvania. The ship operated between California and the Orient for the Pacific mail line. In original lemon gilt frames. 8 in. x 12 ½ in.



65. RARE SAILOR MADE DOUBLE SEAHORSE HEAD WALKING STICK, circa 1850, hand grip and spacer of whale's tooth, two ebony spacers and tapering turned whalebone shaft.



66. WHALEBONE AND WHALE IVORY SWIFT, mid 19th Century, with abalone and tortoise inlay on stand.



67. PAIR OF AMERICAN CAST IRON SAILOR BUST ANDIRONS, circa 1850.
Height 8 ½ in.

68. BRONZE SIGNAL CANNON, circa 1840, mounted on a wood carriage.
Barrel length 18 in. Overall length 30 in.



69. NANTUCKET SAILOR MADE THREAD CADDY, circa 1860, whalebone and pine octagonal sided removable three-tier table stand, with cutout and scrolled whalebone panels, ivory inlaid thread hole leads. Height 8 ½ in. Diameter 7 ½ in.

Exhibitions: Smithsonian Institute; Museum of American Folk Art, 1967

Literature: E. Norman Flayderman, *Scrimshaw and Scrimshanders, Whales and Whalers*, 1972, p. 232; Martha Lawrence, *Scrimshaw, The Whaler's Legacy*, 1993, p. 102

Provenance: The Barbara Johnson Whaling Collection, Sotheby's New York, April 19, 1983, lot 230



70. **JOHN QUINCY ADAMS HOUSE AMERICAN MAHOGANY SIDEBOARD, circa 1840.** Height 52 in. Width 90 in. Depth 28 in. *Literature:* Illustrated in the Willard Bradley Memoirs, pg 113, Privately printed in 1925.

70A. **JOHN QUINCY ADAMS SIGNED U.S. NAVY DISCHARGE PAPER,** for Lt. David H. Porter, April 28, 1826.



71. **PAINTING, OLD WHARF, NANTUCKET, GEORGE HERBERT MCCORD, (AMERICAN 1848-1909)**, oil on canvas view of Commercial Wharf as it appeared from the North in the 19th Century, signed lower right G.H. McCord A.N.A. 18 in. x 30 ¼ in. *Illustrated:* Robert A. diCurcio, Art on Nantucket, 1982, pg. 214, pl. 265
Provenance: The Estate of Grace Gossman



72. PAINTING, *STILL LIFE THEOREM*, RALPH CAHOON (AMERICAN 1910-1982), circa 1950's, oil on masonite depicting a cornucopia of fruit in a scrimshaw ditty box with cover and whale tooth aside. Signed lower right R. Cahoon, Pinxt, in a 19th Century bird's eye maple and gilt frame. 20 in. x 26 ¾ in.



73. RARE SAILOR MADE WHALE IVORY, EBONY AND SILVER SEWING BASKET, mid 19th Century, with heart cutouts. Height 2 ¼ in. Diameter 5 ⅞ in.



74. PENNSYLVANIA FLORAL APPLIQUE QUILT, circa 1860, in shades of red and green on ivory ground. 90 in. x 76 in.



75. PAINTING, *COLORADO MOUNTAIN LANDSCAPE*, ROBERT FRANZ CURRY (AMERICAN 1872-1945), signed lower left R.F. Curry, framed in 22k gold leaf frame. 43 in. x 62 in.

Curry was born in Boston in 1872, and was well known for his large landscape, animal and portrait paintings. He traveled to Munich and studied with H. Knirr, Carl Marr, Alexander Liezen-Mayer and L.V. Lofftz.



76. ENGLISH CARVED OAK SIDEBOARD, 18th Century, with four drawers over two cupboard doors, original engraved brasses. Height 35 ½ in. Width 66 ¼ in. Depth 20 in.



77. PAIR OF FINELY CARVED BLACK FOREST CANISTERS, depicting spread wing eagles on foliage carved and mirrored canisters, circa 1880. Height 23 in. Width 13 ½ in.





**78. PHILADELPHIA CHIPPEN-
DALE WALNUT SIDE CHAIR,**
circa 1760, original finish and
matching rail and seat carved
shells. Height 40 ½ in. Seat
Height 18 ½ in.

**79. PHILADELPHIA CHIPPENDALE
WALNUT SIDE CHAIR,** circa 1760,
original finish and carved seat shell.
Height 40 ½ in. Seat Height 18 in.





**80. PAINTING, *INDIAN AND MAIDEN IN LANDSCAPE SETTING*,
W. SEAMANS (19th Century), oil on canvas, signed lower right W. Seamans,
1875. 36 in. x 29 in.**



81. FRENCH ROSEWOOD CARD VIEWER BY E. ZIEGLER, R des Capucines 35 Paris, circa 1880, rosewood, walnut and ebony stand with both a stereoscopic and studio card viewer. Base 19 in. x 10 ½ in.



82. AMERICAN MAHOGANY BANJO CLOCK, circa 1820. Height 33 in. Width 10 in. Depth 4 in.



83. ENGLISH SAMPLER, Elizabeth Prebble, her work at the age of 9, 1833, in period mahogany frame. 11 ¾ in. x 16 ½ in.



84. 18 INCH TERRESTRIAL GLOBE BY W. & A.K. JOHNSTON, GEOGRAPHERS & ENGRAVERS, EDINBURGH, circa 1870, on mahogany pedestal stand. Height 46 in.

85. WALNUT ADJUSTABLE FOLIO STAND, circa 1880. Height 39 ½ in. Width 28 ½ in.



86. ENGLISH SAMPLER, Martha Beard, her work at the age of 11, circa 1850. 16 in. x 21 ½ in.



86a. PAINTING, *EVENING SAIL UNDER PORT AND STARBOARD LIGHT*, WESLEY ELBRIDGE WEBBER (AMERICAN 1841-1914), oil on canvas. 36 in. x 26 in. Labels on stretchers from Christies East and The Marbella Gallery, Inc. New York.

87. QUEEN ANNE STYLE FIGURED AND BURL WALNUT TWO-PART CABINET, 19th Century, with cornice molded top above two glass doors, raised on cabriole legs ending in pad feet. Height 87 in. Width 42 in. Depth 18 in.

88. SET OF TWELVE ROYAL CROWN DERBY DINNER PLATES, circa 1930. Diameter 10 ½ in.

