



88a. ENGLISH SAILOR'S WOOLIE, 19th Century, portrait of the H.M.S. Hero within curtain swags and tassels. 14 in. x 18 in.



88b. RARE BALEEN WRAPPED CANE WITH WHALE TOOTH TURNED KNOB, circa 1850, with baleen Turk's turban knot collar.



88c. ENGLISH EMBROIDERY ON LINEN "GARDEN ARBOR", 19th Century, initialed lower right. 8 in. x 9 ½ in.



88d. ENGLISH NEEDLEWORK PORTRAIT OF A SHEPHERD BOY, circa 1820, silk floral surround with fabric rosettes and watercolor on silk of shepherd, flock, dog, and landscape. 15 ¼ in. x 13 in.



88e. ENGLISH REGENCY STEPPED TOP BRACKET CLOCK BY BARWISE & SONS, LONDON (1819-1823). Height 16 in. Width 11 ¼ in. Depth 7 in.



89. REVERSE PAINTING ON GLASS OF THE GUN SHIP "H.M.S. FOUAROY-ANT", early 19th Century, in period rosewood frame. 12 ½ in. x 18 in.



90. AMERICAN SHERATON BOWFRONT MAHOGANY CHEST OF DRAWERS, circa 1820, with bird's-eye-maple drawer fronts and cookie corners. Height 40 ½ in. Width 42 in. Depth 20 ½ in.



91. AMERICAN SHERATON GRAIN DECORATED TWO-DRAWER WORK STAND, circa 1820-30. Height 29 in. Width 22 in. Depth 17 $\frac{3}{4}$ in.

92. PAIR OF NEW YORK BRASS ANDIRONS, circa 1790-1810, double lines of beading on urns and finials. Height 20 $\frac{1}{2}$ in.

93. AMERICAN BIRDCAGE WINDSOR SIDE CHAIR, circa 1810, original finish.



94. PAINTING, *DONKEY RIDING ON THE BEACH*, HENRY BERNARD CHALON (BRITISH 1770-1849), circa 1820, oil on canvas whimsical racing scene, unsigned. 17 $\frac{1}{4}$ in. x 21 $\frac{1}{4}$ in.



95. EUROPEAN MAHOGANY AND IVORY PIANO FORM BOX, circa 1830.
Height 6 ½ in. Length 11 ½ in. Depth 7 ¼ in.

96. PAINTING, *PORTRAIT OF A YOUNG LADY*, (Austrian 19th Century), oil on tin depicting a woman holding a pocket watch in gilt and moulded oak frame.
8 ½ in. x 6 ½ in.



97. LOUIS PHILIPPE BURL WALNUT CHEST OF DRAWERS, circa 1870.
Height 37 ½ in. Width 47 in. Depth 20 ¼ in.



98. PAINTING, *HAYSTACK ALONG THE FRENCH COUNTRYSIDE*, FRANKLIN B. DE HAVEN (AMERICAN 1856-1934), oil on canvas, signed lower left F. De Haven, 1897. 22 ½ in. x 27 ½ in.

De Haven was born in Bluffton, Indiana and moved to New York in 1886. He studied under George Smillie and was a member of the National Academy of Design, and recipient of the Silver Medal at the St. Louis Exposition of 1904.



99. BLACK FOREST CARVED WALNUT TRI-ANIMAL BOWL STAND, circa 1890. Height 7 ½ in. Diameter 16 in.



100. BLACK FOREST CARVED WALNUT AND HORN HANGING FOX BRIDLE HOOK, circa 1880. Length 13 ½ in.

101. SAILOR'S WOOLIE, circa 1880, sailor's photo inserted within a heart flanked by six flags, in period maple frame. 5 ½ in. x 7 in.



102. PAINTING, *PARIS PALMS*, ORVILLE HOYT ROOT (19th / 20th Century), oil on canvas, unsigned. 21 in. x 25 ½ in.

Root studied at the Academie Julian, Paris with J.P. Laurens and Benjamin-Constant, 1891-92; Exhibited at the Paris Salon 1896 and 1898.



103. AMERICAN CHIPPENDALE CHERRY GRADUATED TALL CHEST OF SIX DRAWERS, circa 1780, with original brasses. Height 55 ½ in. Width 40 in. Depth 20 in.



104. ENGLISH SAMPLER, Mary Ann Bickerton, her work at the age of 10, 1786. 20 ½ in. x 19 ¼ in.

104a. ENGLISH SAMPLER, Sarah Richardson, her work at the age of 10, 1824. 16 ½ in. x 12 in.



104b. PAIR OF ACORN-TOP BRASS ANDIRONS, circa 1800. Height 20 in.

104c. PAIR OF ACORN-TOP BRASS ANDIRONS, circa 1800. Height 20 in.

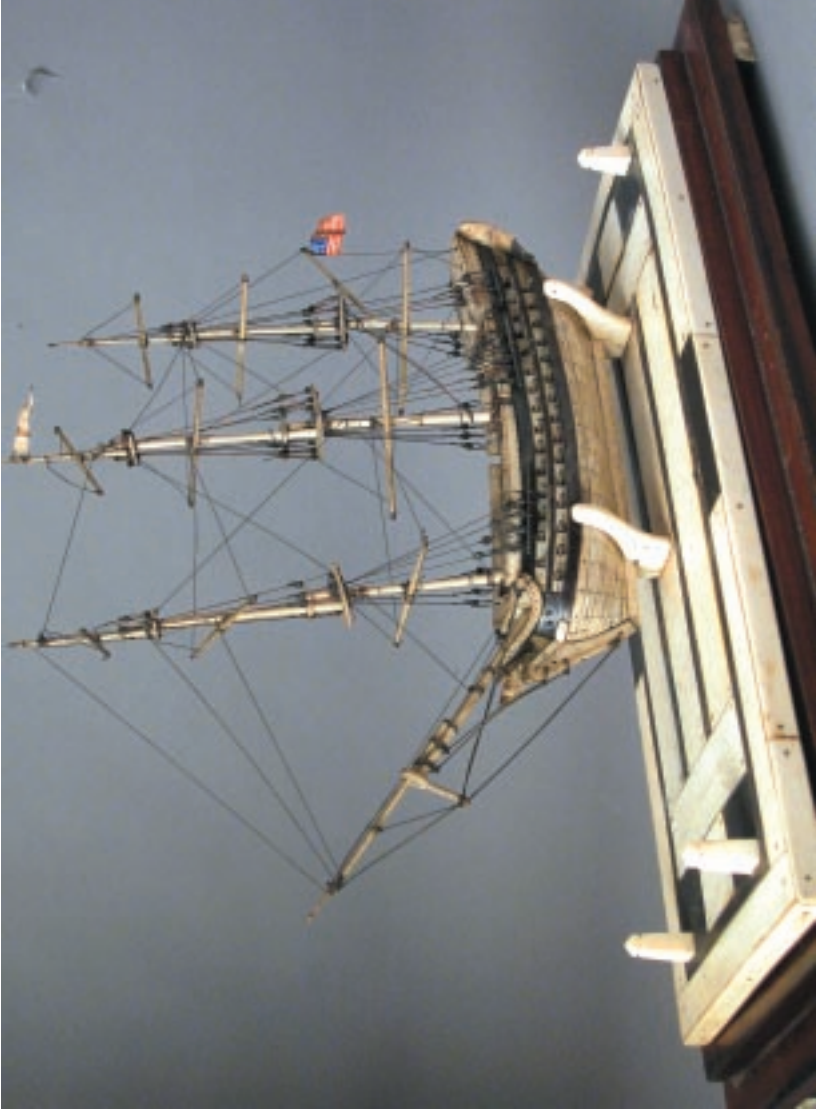


104d. ASSEMBLED SET OF TEN ENGLISH ELM WHEEL-BACK DINING CHAIRS, 19th Century.



104e. ENGLISH REGENCY FOUR-PEDESTAL MAHOAGANY DINING TABLE WITH BURL-WALNUT BAND REEDED EDGE, early 19th Century, with vase turned pedestals, fluted swooping legs, terminating in bronze paw casters. Height 29 ½ in. Length 160 ½ in. Width 47 ¾ in.

104f. ANTIQUE SAROUK CARPET, approximately 12 ft. x 16 ft.



104g. PRISONER-OF-WAR BONE MODEL OF AN AMERICAN FRIGATE, circa 1800, double-decker with wooden deck and trim, sixty guns, carved eagle figurehead, female figural sternboard, paper American ensigns flying at masthead and stern; mounted on bone and baleen base. Height 10 ½ in. Length 15 ½ in. Width 6 in.



104h. RARE JOSE FORMOSO REYES MAIL BASKET, with single carved wood handle.



104i. TIFFANY STUDIOS FLEUR-DE-LIS GREEN PATINA DOUBLE CANDLESTICK, with snuffer, inscribed on base Tiffany Studios, New York 1232. Height 8 $\frac{3}{4}$ in.



105. PAINTING, *PORTRAIT OF AN ARISTOCRATIC GENTLEMAN*, CONTINENTAL SCHOOL, dated 1754. 35 ¼ in. x 28 ½ in.



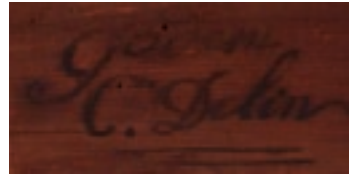
106. COLLECTION OF SIX CHINESE EXPORT MUGS, 18th Century.
Smallest: Height 4 ¼ in. Diameter 3 ¼ in. Largest: Height 6 in. Diameter 4 ¾ in.



107. PAINTING, *LUMINOUS VIEW OF GRAND MANAN*, CHARLES HENRY GIFFORD (AMERICAN 1839-1904), oil on canvas signed lower left C.H. Gifford 1901, in carved gilt frame bearing original paper label: Hutchinson's Picture Department, New Bedford, Mass. 18 ¼ in. x 30 in.



108. FINE AND RARE MATCHED PAIR OF ANGLO-INDIAN CARVED ROSEWOOD PIER TABLES, circa 1820, with white marble tops and double reeded edges, mirrored backs. Height 33 in. Width 44 ½ in. Depth 19 in.



109. PAINTING, *PORTRAIT OF CAPTAIN WILLIAM COLE, CHARLES DELIN (AMSTERDAM 1756-1818), circa 1805*, oil on canvas of Captain Cole, born at Wellfleet, Barnstable County, Massachusetts in 1764. A sea captain of high repute, his portrait is flanked by five ships, the most prominent flying the American flag. Signed on the original stretcher C. Delin. 27 ¼ in. x 22 in.



110. IMPORTANT ENGRAVED WHALE TOOTH, 19th Century, engraved with Starboard view of an American whaleship with two longboats engaged in battle with a sperm whale; the reverse with port view of the same ship and two longboats amongst several sperm whales, circa 1830. Length 6 ¾ in. Width 3 ⅝ in.