



**242. ENGLISH SAILOR'S SILKWORK**, circa 1850, of two masted ship, circa 1850. 7 in. x 12 ½ in.



**243. CHELSEA BRONZE SHIP'S BELL CLOCK AND BAROMETER**, on patina pedestal base with ship's wheel mounted faces. 9 in. x 15 in. x 3 ½ in.

**244. ENGLISH SAILOR'S SILKWORK**, 19th Century, three masted warship under a star filled sky, in period frame. 10 ½ in. x 10 ½ in.



**245. AMERICAN CLASSICAL MAHOGANY TWO DRAWER TABLE**, circa 1830, top drawer exposes a writing surface. Height 30 in. Width 22 ½ in. Depth 16 in.



**245a. PAINTING, *YOUNG BOY PLAYING THE JEW'S HARP***, CHARLES ROSSITER (BRITISH 1827-1890), oil on canvas signed lower right Rossiter. 20 in. x 16 in.



**246. AMERICAN GILT CONSISTION MIRROR, circa 1820, with full columns, deep relief carved cornucopia and fruit decoration. Height 45 ½ in. Width 23 ¼ in.**



**247. NANTUCKET LIGHTSHIP ROUND SWING HANDLE BASKET, last quarter of the 19th Century, with shaped handle and concentric circles in base. Height 7 ¼ in. Diameter 8 ½ in.**



**248. ENGLISH SAILOR'S SILKWORK, circa 1880, four flags and ships surrounding lion and unicorn. 20 in. x 26 in.**



**249. ENGLISH OAK BOOK PRESS, CHEST OF DRAWERS, 19th Century**, with double pressing surfaces, on bracket feet. Height 59 in. Width 30  $\frac{3}{4}$  in. Depth 18  $\frac{3}{4}$  in.

**250. PAINTING, *FULL PORTRAIT OF EDMUND KEAN PORTRAYING MACBETH* (1789-1833)**, first quarter of the 19th Century, oil on wood panel. 25 in. x 20  $\frac{1}{2}$  in.





**251. UNIQUE MARTHA CAHOON DECORATED TIN HAMPER, circa 1960, signed on pedestal, Martha Cahoon. Height 24 ½ in.**

**252. ENGLISH INLAID MAHOGANY AND BRASS MOUNTED UMBRELLA STAND.**



**253. PAINTING, *FRUIT AND JUG OF WINE STILL LIFE*, (AMERICAN, 19th Century) oil on canvas. 19 ½ in. x 23 ½ in.**



**254. DUTCH MARQUETRY INLAID “HANDKERCHIEF” DROP LEAF GAME TABLE,** early 19th Century.



**255. PAINTING, *LOW TIDE ACTIVITIES*, J. KING JAMES (19th Century),** watercolor on paper, signed lower left J. King James pinxt, 1883. 11 ½ in. x 18 ½ in.



**256. ENGLISH OAK ONE DRAWER SIDE TABLE, 19th Century,** with Queen Anne pad feet. Height 28 ½ in. Width 29 ¾ in. Depth 18 ½ in.

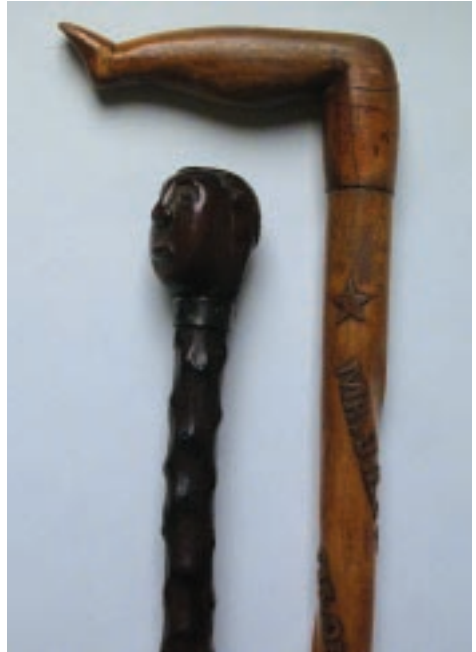
**257. PAIR OF ENGLISH QUEEN ANNE ELM WOOD RUSH SEAT SIDE CHAIRS, circa 1780.** Height 38 ½ in. Seat Height 18 in.

**258. MASON'S IMARI PATTERN SERVING PLATTER, mid 19th Century.** Length 17 in.

**259. ENGLISH FAUX ROSEWOOD GRAINED PLATE BUCKET, circa 1900.** Height 12 ½ in. Diameter 12 in.



**260. PAINTING, *CONTINENTAL RIVER LANDSCAPE*, circa 1820,** oil on canvas of nursing mother with figures and goats in foreground. 26 ½ in. x 34 ¼ in.



**261. ENGLISH SAMPLER**, Ann Harper, her work at the age of 12, 1786. 20 ¼ in. x 13 ¼ in.

**262. AMERICAN CARVED FOLK ART WALKING STICK**, circa 1880, with carved bust of an African American man, with copper riveted steel collar, on branch shaft.

**263. AMERICAN FOLK ART CARVED LADY'S LEG CANE**, circa 1908, with twist carved inscription: "*Mr. J.E. Fisher was born May the 21, 1857 in Morgan Co. W. VA. Now a Resident of Bedford St. 625 Dale. Johnston. Cambria. Co. Pa. 1908*".

**264. ENGLISH SAMPLER**, Elizabeth Gottam, her work at the age of 17, 1846, in period yew wood veneer frame. 23 in. x 20 in.





**265. ENGLISH WALNUT TILT TOP SLIPPER FOOT CANDLESTAND, circa 1810.** Height 29  $\frac{1}{4}$  in. Diameter 17  $\frac{1}{2}$  in.

**266. ENGLISH OAK AND ELM CORNER CHAIR, 19th Century.** Height 31 in. Width 27  $\frac{1}{4}$  in.



**267. PAINTING, *COAST OF BRITTANY*, RICHARD HAYLEY LEVER (AMERICAN 1876-1958),** oil on canvas, signed lower right Hayley Lever, R.W.A., 1908. 6  $\frac{1}{2}$  in. x 9  $\frac{1}{2}$  in.



**268. EGLMISE GILT CONSTITUTION MIRROR, early 19th Century,** with scene of a burning warship with manufacturer's label "Portland Looking Glass Manufactory, James Todd Looking Glasses". 26 ¼ in. x 14 ¼ in.



**268d. BENJAMIN BUNKER COIN SILVER PORRINGER, with "BB" hallmark and date 1811.**



**268a. CARVED WHALE IVORY AND WHALEBONE WALKING STICK, circa 1850,** turned ivory knob with twisted carved bone shaft.

**268b. CARVED IVORY LADY'S HAND WALKING STICK, circa 1870.**

**268c. CARVED WHALE IVORY AND WHALEBONE WALKING STICK, circa 1850,** with hook knob and baleen spacer, hatch carved bone shaft.



**269. AMERICAN GILT DECORATED TIN ROOSTER WEATHERVANE, 19th Century.** 23 in. x 19 ¼ in.



**270. PAINTING, *BATTERSEA WAREHOUSES, RIVER THAMES*, RICHARD HAYLEY LEVER (AMERICAN 1876-1958), oil on canvas, signed lower right Hayley Lever. 6 ½ in. x 9 ½ in.**



**271. PAINTING, *THAMES RIVER LONDON*, 1902, RICHARD HAYLEY LEVER (AMERICAN 1876-1958), oil on board, signed lower right and on reverse Hayley Lever. 6 ½ in. x 9 ½ in.**



**272. EBONY AND ROSEWOOD COLLECTOR'S BOX, circa 1875**, interior fitted with three sliding caned double compartment trays. Height 11 ½ in. Width 11 ½ in. Depth 15 ¾ in.

**273. ENGLISH SAILOR'S WOOLIE, circa 1890**, ship flying parade flags, in period bird's eye maple frame. 13 in. x 17 in.



**274. PAINTING, *CONCARNEAU* 1905, RICHARD HAYLEY LEVER (AMERICAN 1876-1958)**, oil on board, signed lower left and on reverse Hayley Lever. 6 ½ in. x 9 ½ in.



**275. EDWARDIAN DECORATED SATINWOOD CABINET, circa 1870**, with three doors, raised on square tapering legs. Height 40 ½ in. Width 42 ½ in. Depth 20 ½ in.



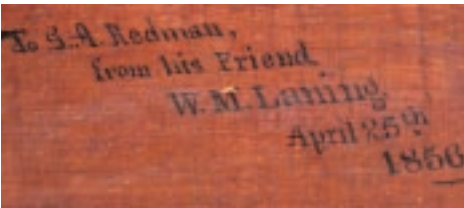
**276. ENGLISH SAMPLER**, Sarah Bramley, her work at the age of 14, 1823, in period maple frame. 19 ¾ in. x 19 ½ in.



**277. ENGLISH SAILOR WOOLIE, circa 1850, six flags flanking beaded crown and puffed wool floral wreath, in period frame. 13 ½ in. x 18 in.**



**278. ENGLISH SOLDIER REGIMENTAL WOOLIE, circa 1880-1890, in period frame. 20 in. x 26 ¼ in.**



**279. PAINTING, *COLONIAL BEACH GATHERING*, WILLIAM LANING (19th Century), signed lower right Wm Laning, 1851.** Inscribed on reverse of canvas "To G.A. Redman from his friend Wm Laning, April 25, 1856", New York labeled canvas. 17 ½ in. x 23 ½ in.

**280. EDWARDIAN INLAID ROSEWOOD PIVOTING ENVELOPE GAME TABLE, circa 1910,** interior fitted with felt and chip cups above one drawer. Height 29 in. Width 22 in. Depth 22 in.





**281. SET OF TWELVE GORHAM STERLING SILVER "FLORENZ" BREAD AND BUTTER PLATES.** Marked A12793.

**282. ENGLISH SILVER FIVE-PIECE TEA AND COFFEE SERVICE, 19th Century,** made for the Persian market. Tray diameter 17 in.



**283. FRENCH KINGWOOD VENEERED PARQUETRY PASTRY SERVER, 19th Century,** multi-wood inlay with side swing doors. Height 32 ½ in. Width 38 in. Depth 16 ¾ in.



**284. ENGLISH SAMPLER**, Amey Barber, 1773. 20 in. x 15 in.

**285. ENGLISH SAMPLER**, Ann Cross, her work at the age of 12, 1831, in period bird's eye maple frame. 16 in. x 12 in.



**286. ENGLISH SAMPLER**, Mary Eliza Beard, her work at the age of 10, circa 1850. 17 ½ in. x 16 ½ in.

**287. ENGLISH SAMPLER**, Clara Beard, her work at the age of 10, circa 1850. 17 ½ in. x 15 ¾ in.