



69. FINE DAVIS HALL (1828-1905) NANTUCKET BASKET, 19th Century, sophisticated carved and shaped lollipop swing handle on a round form with chamfered staves, pine base with concentric interior circles, printed paper label "*Made by Davis Hall, Nantucket, Mass.*" Height 4 ½ in. Diameter 10 in.

70. FINE DAVIS HALL (1828-1905) NANTUCKET BASKET, 19th Century, sophisticated carved and shaped lollipop swing handle on a round form with chamfered staves, pine base with concentric interior circles, partial printed paper label "*Made by Davis Hall, Nantucket, Mass.*" Height 5 in. Diameter 11 ¼ in.



71. SAILOR MADE WOOLIE, 19th Century, British clipper ship and two smaller vessels in an oval surround with stars, in bird's eye maple frame. 12 ½ in. x 19 ½ in.



72. **BLOWN GLASS SWEET MEAT TREE**, circa 1820, eight branches and seven hanging baskets. Height 14 in.

73. **ENGLISH MAHOGANY GAME TABLE**, circa 1800, D-shaped top with satin wood cross band. Banding and line inlay throughout with a stop block at end of tapering leg. Height 29 ¼ in. Width 36 ¼ in. Depth 17 ¾ in.



74. **ENGLISH NEEDLEWORK SAMPLER**, 1826, with school, house, carriage and figures. 20 in. x 20 in.



75. HEPPLEWHITE INLAID MAHOGANY SALESMAN'S SAMPLE CHEST OF DRAWERS, circa 1800, with ivory shield escutcheon and turned pulls. Height 10 $\frac{3}{4}$ in. Width 13 $\frac{1}{2}$ in. Depth 8 $\frac{1}{2}$ in.

76. PAIR OF SILVER PLATED AND BRASS CANDLESTICKS, circa 1900, anchors with braided rope on circular bases. Height 7 in.

77. PAINTING, CONTINENTAL "PORTRAIT OF A LADY", circa 1840, watercolor on paper. 5 $\frac{3}{4}$ in. x 5 in.

78. KNIFE BOX, 19th Century, with later decoration and stand in the Adams style.



79. FRENCH SAILOR MADE WOOLIE, 19th Century, depicting the "Philippe" and "Rosalie" with trapunto sails, in shadowbox frame. 17 in. x 22 $\frac{1}{2}$ in.



80. PAINTING, CHINA TRADE "*PORTRAIT OF THE SHIP C.S. STAMBOUL*"
oil on canvas, built in 1875 by J. Bingay, Port Gilbert, Nova Scotia, circa 1875.
17 ½ in. x 23 ½ in.



81. ENGLISH MAHOGANY DRUM TABLE, circa 1820. Height 30 in.
Diameter 45 ½ in.



82. PAINTING, *CONTINENTAL OVAL PORTRAIT OF A SEATED WOMAN*, 18th Century, oil on canvas of a woman wearing fancy clothes and pearls in floral gilt period frame. 40 in. x 33 in.



83. GEORGE III DIMINUTIVE CARVED MAHOGANY SERPENTINE GAME TABLE, circa 1780-85. Height 27 ½ in. Width 33 in. Depth 16 in.



84. ENGLISH REGENCY BREAKFAST TABLE, circa 1820, rectangular mahogany top inlaid and cross-banded, reeded edge. Height 28 $\frac{1}{4}$ in. Width 54 $\frac{1}{2}$ in. Depth 36 in.

85. CHIPPENDALE CARVED MAHOGANY ARMCHAIR, circa 1790, double arched back, interlaced splat, rolled armrests.



86. ENGLISH SILK EQUESTRIAN EMBROIDERY "MARY SHARMAN" HUNT SCENE, APRIL 4, 1787. 10 in. x 16 in.



87. REGENCY SATINWOOD TWO-TIER DUMBWAITER, circa 1820, circular shelves on turned shaft with sabre legs. Height 38 in. Diameter 24 in.

88. SET OF SIX ENGLISH GILT HAND DECORATED LANDSCAPE PORTRAIT PLATES, circa 1820, with shaped borders. Diameter 9 in.

89. PAIR OF REGENCY ROSEWOOD POLE SCREENS, circa 1820, with painted papier mache panels decorated with fountains, floral arrangements and peacocks.



90. CARVED WHALE IVORY KNOB WALKING STICK, 19th Century, on a multi-wood inlaid shaft, brass ferrule. Length 36 $\frac{3}{4}$ in.

91. CARVED WOOD KNOB WALKING STICK, 19th Century, with ebony and ivory diamond inlay, whalebone ferrule. Length 38 $\frac{1}{2}$ in.

92. CARVED WHALE IVORY KNOB WALKING STICK, 19th Century, on wood shaft with abalone inlay, whalebone ferrule. Length 36 $\frac{1}{4}$ in.

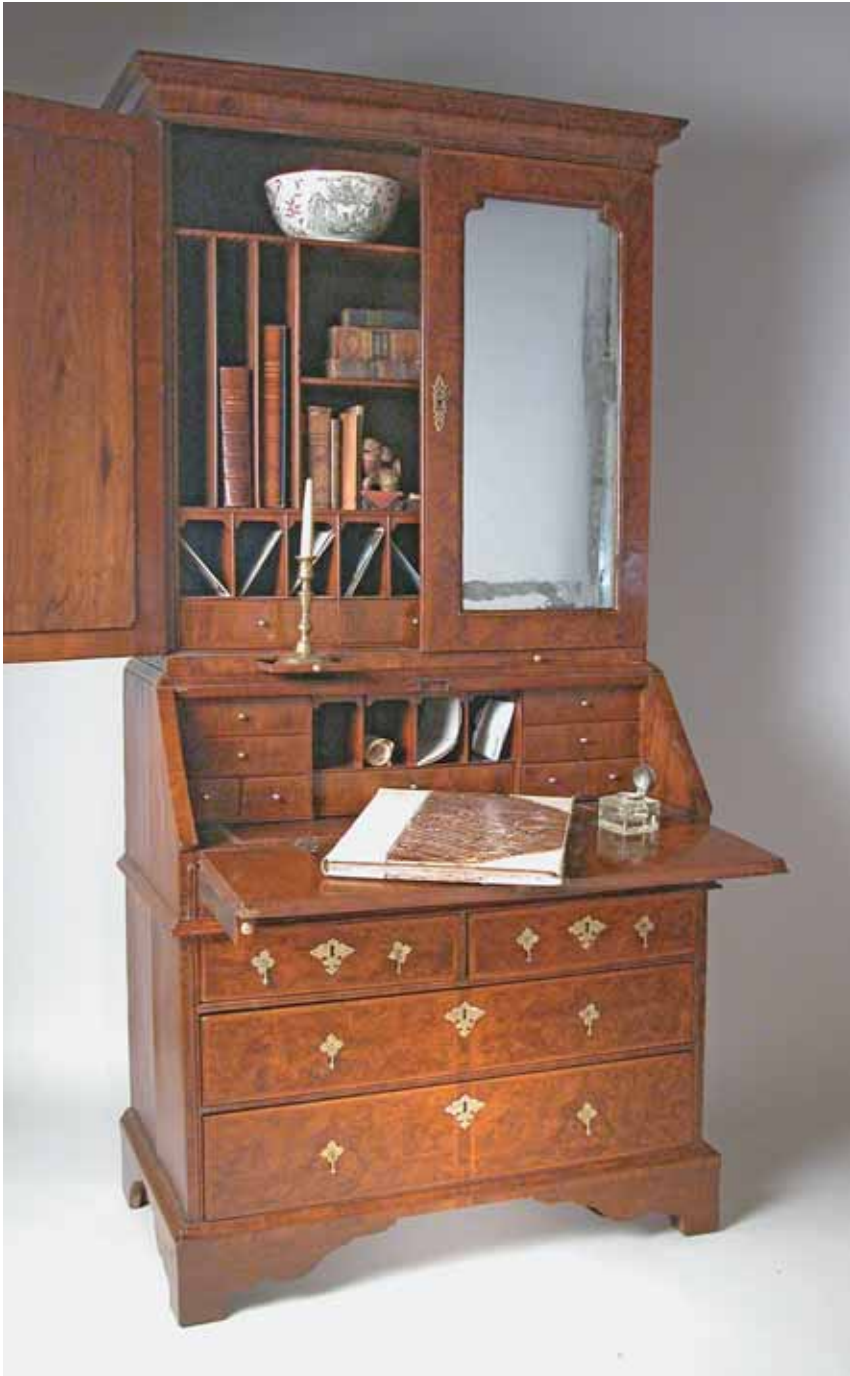


93. ENGLISH SAILOR'S WOOLIE, 19th Century, British Man-O-War on dark blue sea. 18 in. x 31 in.



94. AMERICAN QUEEN ANNE DROP LEAF PETITE DINING TABLE, mid 18th Century, with one drawer. Height 29 ½ in. Width 47 ¼ in. Depth 19 in.

95. OUSHAK CARPET. 13 ft. 3 in. x 9 ft. 5 in.



96. QUEEN ANNE BURL WALNUT SECRETARY DESK, circa 1720-1740, the upper section with cornice molded top above two rectangular doors fitted with mirror glass, slant lid base with fitted interior raised on broad shaped bracket feet. Height 82 in. Width 38 in. Depth 23 in.



97. FINE BANK NOTE ENGRAVER'S SCRIMSHAW WHALE TOOTH, circa 1850, a formally dressed whaling Captain and companion on one side, the reverse engraved with Captain's mansion and ship with banner and single rose, possibly symbolizing the ship "Rose". All encompassed by elaborate upper and lower bands. Height 5 ¼ in.



98. WHALE IVORY EAGLE PIE CRIMPER, circa 1850, Greek Key spoked wheel with opposing three-tine fork. Length 7 ½ in.
Ex-collection: Norman E. Flayderman. Illustrated: "*Scrimshaw and Scrimshanders, Whales and Whalers*" p. 182.



99. FINE WHALE IVORY AND WHALEBONE CAPTAIN'S WALKING STICK, circa 1850, carved ivory octagonal paneled and reeded reverse bell knob, above two carved ivory sections with mother of pearl and silver diamond inlays and spacers, on a tapering bone shaft with eight carving variations.



100. WILLIAM APPLETON (1857-1918) NANTUCKET SEWING BASKET, with delicate heart carved handles. Height 3 in. Diameter 6 ½ in.

101. FREE FORM WOVEN OVAL SWING HANDLE NANTUCKET BASKET, circa 1900, with one dollar pencil marked price on bottom plate. Height 4 ½ in. Length 10 in. Width 6 ¾ in.



102. SAILOR'S VALENTINE, 2nd half of the 19th Century, shell collage with heart and flower motif. 14 in.

103. TURNED, CARVED AND SCRIBED BURLWOOD BOWL, circa 1860. Height 6 ½ in. Diameter 15 ¼ in.



104. PAINTING, ALFRED THOMPSON BRICHER (AMERICAN 1837-1908)
"ROCKY COASTLINE", oil on board, signed lower right A.T. Bricher.
13 $\frac{3}{4}$ in. x 9 $\frac{1}{2}$ in.



104A. PHILADELPHIA CARVED MAHOGANY GAME TABLE, circa 1820,
Height 29 in. Width 36 in. Depth 18 in.



105. MAHOGANY CARVED DOUBLE PEDESTAL DINING TABLE, early 19th Century, with one leaf. Height 28 $\frac{3}{4}$ in. Length 70 in. (with one leaf) Width 47 in.



106. PAINTING, JAMES GARDNER BABBIDGE (AMERICAN 1844-1919) "*PORTRAIT OF THE SCHOONER LOTTIE AMES*", oil on canvas, inscribed "*Schooner Lottie Ames, Capt. Robert G. Wooster off Gay Head, Painted by J.G. Babbidge, 1876.*" 21 $\frac{1}{4}$ in. x 29 $\frac{1}{2}$ in.



107. JOSLIN'S TERRESTRIAL FLOOR GLOBE, circa 1870, Boston, on fitted cast iron tripod stand. Height 39 in.

108. GENTLEMAN'S MAHOGANY TRIPOD SHAVING STAND, circa 1800.

109. DIORAMA OF THE SHIP "G.L. THAYER", 19th Century.
28 in. x 41 ½ in.



110. SAILOR MADE WOOLIE, 19th Century, British Man-O-War flying the British flag, in rosewood and gilt frame. 17 ½ in. x 24 ½ in.



111. ENGLISH MAHOGANY CAMPAIGN CHEST OF DRAWERS, circa 1880, Army & Navy C.S.L. Makers, brass straps, corners and recessed pulls. Height 40 in. Width 39 in. Depth 18 in.



112. CASED FOLK ART MODEL OF THE "GOLDEN CLOUD", circa 1880, three masted waterline model on painted sea in front of active harbor scene. The oak case embellished with carved star rosettes at the corners. Height 27 in. Width 39 in. Depth 14 ½ in.



113. SET OF SIX AMERICAN SHERATON FANCY CARVED AND DECORATED DINING CHAIRS, circa 1820, rush seats.



114. FERDINAND SYLVARO (b. 1869) SWING HANDLE NANTUCKET FRUIT BASKET, hand written paper label "Made by Ferdinand Sylvaro, 97 Orange St., Nantucket, Mass., \$3.25". Height 4 in. Diameter 10 in.

115. FERDINAND SYLVARO (b. 1869) SWING HANDLE NANTUCKET BASKET, typed label "Made by Ferdinand Sylvaro Nantucket". Height 3 ½ in. Diameter 6 ½ in.

116. FERDINAND SYLVARO (b. 1869) DOUBLE HANDLE NANTUCKET SEWING BASKET, hand written paper label "Made by Ferdinand Sylvaro, 97 Orange St., Nantucket, Mass., \$2.50". Height 4 in. Diameter 9 in.