



154. CONTINENTAL CARVED AND GILT MIRROR, circa 1790, fruit basket and leaves within scrolls. 36 in. x 19 in.

155. ENGLISH MAHOGANY GAME TABLE, circa 1800, acorn and line inlays, D-shaped top with cross banding. Height 29 ½ in. Width 35 ½ in. Depth 17 ½ in.



156. PAINTING, JACK L. GRAY (AMERICAN 1927-1981) *"OFF PROVINCETOWN"*, oil on canvas of the "Provincetown" fishing boat on a calm sea, with fog bank and vessels in distance. 23 $\frac{3}{4}$ in. x 36 in. Kennedy Gallery label on reverse.



156A. FINE AND RARE MATCHED PAIR OF SHERATON DECORATED SATINWOOD BOOKCASES, circa 1810-1820, arched with inset battersea figural plaques, graduated shelves, inlaid stiles, flaring French bracket feet. Height 68 $\frac{1}{2}$ in. Width 37 $\frac{3}{4}$ in. Depth 7 in.



157. CARVED IVORY SAILOR BUST WALKING STICK, 19th Century, with hardwood shaft. Length 36 ½ in.

158. CARVED AND SCRIMSHAWED BIRD HANDLE CANE, circa 1850, on a bamboo shaft.



159. SET OF FIVE ENGLISH REGENCY CARVED MAHOGANY DINING CHAIRS.



160. RARE LARGE SIZE REGENCY CARVED AND GILDED CONVEX MIRROR, circa 1810-1815, with eagle surmounted on a conical plinth, flanking dolphins with sprays, shell and leafage carved base ornament. Height 55 in. Width 32 in.



161. FINE CHIPPENDALE CARVED MAHOGANY SERPENTINE SLANT-FRONT SECRETARY BOOKCASE, circa 1770, bonnet top with two glazed doors revealing eight pigeon holes and book shelves, the shell carved slant lid reveals eight pigeon holes and drawers and central carved door above four graduated drawers, terminating in ball and claw feet. Height 99 in. Width 44 in. Depth 22 in.



162. PAINTING, WILLIAM PIERCE STUBBS (AMERICAN 1842-1909), *PORTRAIT OF THE ELIZA J. PENDELTON*, untouched oil on canvas residing in original gilded frame, signed lower left, W.P. Stubbs. 29 in. x 45 ½ in.

The *Eliza J. Pendleton* on her maiden voyage from Portland, Maine Harbor, the Eliza was a tern, a three mast schooner with shallow draft and a center-board. She was part of the Fields C. Pendleton Fleet, the largest fleet at the turn of the century. After 1900 she became part of the fleet of Fields S. Pendleton. Built in 1891 at Belfast, Maine by C.P. Carter & Co. to carry lumber and other cargos from and to smaller ports that larger vessels could not access. Her masters were Fletcher until 1897, Hutchinson until 1902 and John Marr until 1905 when she was lost in a storm off the New Jersey coast.

Her official number was 136,237; her signal letters were *KJTF*; her dimensions were 180.1' x 35.9' x 17.9'; gross tonnage 751; new tonnage 714.



163. NEST OF SEVEN FERDINAND SYLVARO (NANTUCKET 1869-1952) ROUND OPEN SWING HANDLE NANTUCKET BASKETS, circa 1925, oak staves, rims and handles, scribed maple bottom plates and original paper labels inscribed "*Made by Ferdinand Sylvaro, 97 Orange St., Nantucket, Mass.*" Each base inscribed with owner's initials *E.L.R.*
Height 8 in. Diameter 13 in. – graduating to Height 4 in. Diameter 4 $\frac{3}{4}$ in.



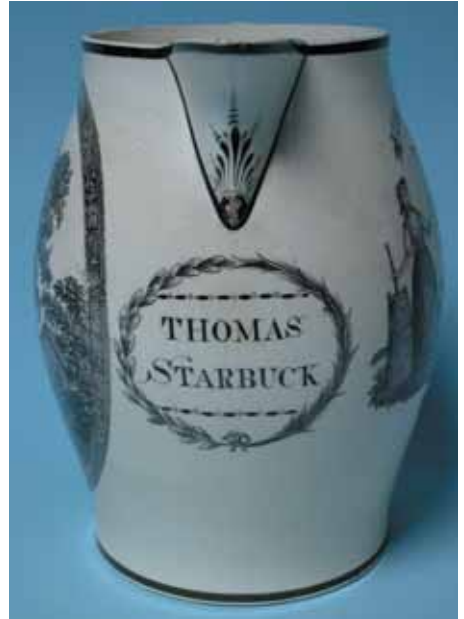
164. PAINTING, CHARLES HENRY GIFFORD (AMERICAN 1839-1904) "*BEACHED FISHING SCHOONER*", oil on canvas signed lower left C.H. Gifford. 5 in. x 8 in.



165. NANCY HANK NAUTICAL CARVED SEA CHEST, 19th Century, carved with eagle and two gents, facing one another "*Ship Friends*", rope beckets. Height 17 in. Width 31 in. Depth 20 in.



166. AMERICAN FOLK ART PINE TRADE SIGN FIGURE, circa 1820-30, on black painted custom plinth. Height 47 in. Overall Height 67 ½ in.



167. VERY RARE LIVERPOOL PITCHER, THOMAS STARBUCK, NANTUCKET (b. 22 October 1742, d. 13 December 1830), "The Farmer's Arms. Height 7 ½ in.



168. PAINTING, WENDELL MACY (AMERICAN 1845-1913) "*OLD SAM WINSLOW'S HOUSE, QUINCE STREET, NANTUCKET*", oil on canvas signed and dated lower right Wendell Macy, 1894, Vose Galleries label on reverse. 20 in. x 16 in.



169. PAINTING, WILLIAM STARBUCK MACY (AMERICAN 1853-1945) "RETURNING HOME", oil on canvas signed lower left W.S. Macy, Vose Galleries label on reverse. 17 ¼ in. x 29 ½ in.



170. TWO 19TH CENTURY DECORATED TEA CANISTERS, #2 AND #3. Height 16 in.

171. 19TH CENTURY DECORATED TEA CANISTER #17, converted to lamp. Height 19 in.

172. ENGLISH OAK SIX DRAWER SIDEBOARD, 18TH CENTURY, with scalloped skirt. Height 31 in. Width 75 in. Depth 20 in.



173. SET OF TEN CAULDEN, ENGLAND FINELY HAND PAINTED GAME PLATES, circa 1915, featuring ten bird species in their habitat. *The American Golden Plover, Pheasant, Snipe, Red Grouse, Ptarmigan, Woodcock, Capercaillie, Black Game, American Turkey, and Partridge*, each signed by the artist J. Birbeck, Sen. Retailer by Davis Callamore & Co. 5th Avenue & 37th Street, New York. Diameter 9 1/2 in.



174. COUNTRY FRENCH FRUITWOOD BUREAU PLATTE, circa 1820, double work sides, the front with cut frieze and six drawers, the opposing side with eight drawers. Height 33 1/2 in. Length 58 3/4 in. Width 37 1/4 in.

175. FRENCH TOLE TWO-LIGHT CANDLESTICK LAMP, 20th Century. Height 19 in.



176. AMERICAN IRRIDESCENT ART GLASS VASE MADE BY PAUL FRANK, circa 1920. Frank was employed by Louis Comfort Tiffany and then Quezel. He left Quezel in 1924 to open Lustre Art. This vase is accompanied by a photograph of Paul Frank in the glass blowing factory, the vase and photo descended in his family.

176A. TIFFANY DOUBLE STUDENT'S LAMP, circa 1890, green patina lamp base converted with a pair of wavy glass acorn leaded shades. Shades stamped "*Tiffany Studios, New York*". Diameter Shades 9 $\frac{3}{4}$ in. Height 29 $\frac{1}{2}$ in.



Detail of rare whale ivory scrimshaw figurehead.



Detail of some of the whale ivory deck elements and scrimshaw deck plank lines.