



**244. HENRY STEPHENS EDDY (AMERICAN 1878-1944) “Nantucket Whaling Museum”**, oil on board, signed lower left Eddy. 18 in. x 24 in.



**245. AMERICAN INLAID KNEE HOLE DESK, 1st Quarter of the 19<sup>th</sup> Century**, mahogany case with satin and tulip wood urn, shell, star, fan, and line inlay. Height 31 in. Width 37 ½ in. Depth 20 ½ in.



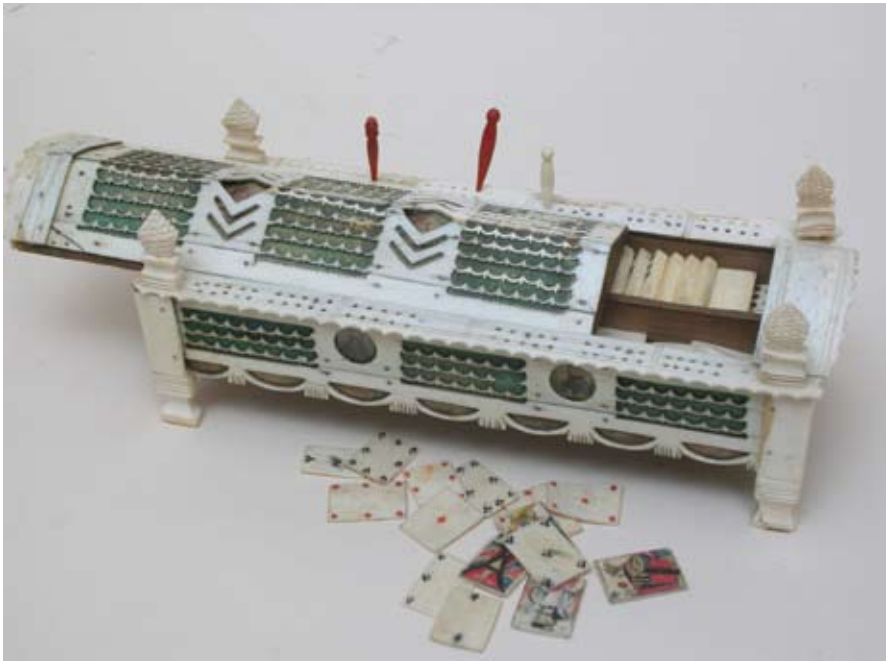
**246. RICHARD HAYLEY LEVER (AMERICAN 1878-1958) “Hither Creek”,** oil on canvas, signed lower right Hayley Lever. 10 in. x 12 in.



**247. RICHARD HAYLEY LEVER (AMERICAN 1878-1958) “Hither Creek”,** watercolor on paper, signed lower right Hayley Lever, 1929. 14 in. x 22 in.



**248. NAPOLEONIC PRISONER OF WAR STRAW WORK BOX**, circa 1800, in the form of a book, hinged cover exposes large watercolor “the seat of the late Henry Muilman Esq. at Dogenhain in Essex” and multiple covered compartments. 3 in. x 13 in. x 9 ½ in.



**249. NAPOLEONIC PRISONER OF WAR CARVED BONE GAME BOX**, circa 1800, picked slide cover with bone wave carving on green paper, matching side designs with six miniature watercolor portraits, the interior with complete set of polychrome cards, 28 dominos, and 4 pegs. 10 in. x 4 in.



**250. OIL ON CANVAS OF THE SHIP *ARABIA***, Thomas Fuller of Salem, Master and John Gardner of Boston, Master, built 1863, Kennebunk, Maine. 23 in. x 34 in.



**251. NAPOLEONIC PRISONER OF WAR POLYCHROMED GAME BOX**, circa 1800, in the form of a child's book, the slide top with a portrait of a young girl, the interior with 35 dominos. 3 ½ in. x 2 ½ in. x 1 in.

**252. NAPOLEONIC PRISONER OF WAR BONE GAME BOX**, circa 1800, dot, wave, and clover carved dome slide cover on green paper with matching sides. 8 ½ in. x 3 ½ in.

**253. NAPOLEONIC PRISONER OF WAR BONE GAME BOX**, circa 1800, dome slide cover above a double compartment box with carved woman and hearts, with a set of 40 dominos. 8 ½ in. x 3 ¼ in.



**254. OIL ON CANVAS “Stormy Harbor”, signed lower center T.T., 1805.**  
25 ½ in. x 44 in.



**255. NAPOLEONIC PRISONER OF WAR POLYCHROMED BONE DOMINO BOX, circa 1805**, with carved dome hinged cover exposing a polychromed flat slide lid depicting the bust of Lord Nelson on his memorial with Britannia alongside, the interior with a 54 piece domino set. 9 in. x 3 ½ in.

**256. NAPOLEONIC PRISONER OF WAR POLYCHROMED DOUBLE DOME GAME BOX, circa 1805**, with heart paneled hinged cover above a flat slide depicting Lord Nelson's tomb with cannons and crossed flags, the interior with 53 colored dominos, 2 pegs, and 2 dice. 10 ½ in. x 4 ½ in.

**257. SIGNED TIFFANY STUDIOS  
"FEATHER JEWEL" LEADED  
GLASS LAMP SHADE,** mounted on  
a turned brass base.  
Diameter 16 in.



**258. BARWISE & SONS, LONDON MANTLE CLOCK,** circa 1819-1823,  
bronze mounted mahogany case with ebony trim, repeater mechanism.  
Height 16 in. Width 11 in. Depth 6 ½ in.



**259. PAIR OF ARTS AND CRAFTS BRONZE MOUNTED STAINED GLASS HANGING LIGHT FIXTURES**, purported to be from the Phister building in Chicago. Height 18 in. Diameter 21  $\frac{3}{4}$  in.



**260. GROUP OF TEN JOHN JAMES AUDUBON VOLUMES COMPRISING:**

***JOHN JAMES AUDUBON AND REV. JOHN BACHMAN, QUADRUPEDS OF NORTH AMERICA, IN 3 VOLUMES***, with 155 plates, George R. Lockwood Publishers, New York, 1849.

***JOHN JAMES AUDUBON BIRDS OF AMERICA, FROM DRAWINGS MADE IN THE UNITED STATES AND THEIR TERRITORIES, IN 7 VOLUMES***, Reissued by J.W. Audubon, Roe Lockwood and Son Publishers, New York, 1861.



**261. ABRAHAM LINCOLN POLYCHROME WOOD SLIDE TOY, late 19<sup>th</sup> Century.** *Ex-collection:* Bernard Barenholtz, Sold Sotheby's January 1990. Height 7 ½ in.

**262. POLYCHROMED WOOD FRAGMENT OF A RED COATED MAN, late 19<sup>th</sup> Century.** *Ex-collection:* Bernard Barenholtz, Sold Sotheby's January 1990. Height 13 in.

**263. GROUP OF THREE SQUARE DANCING COUPLES, late 19<sup>th</sup> Century,** composition and original polychrome painted surface. Found in Lancaster Co., Pennsylvania. Height 6 ¼ in.

**264. ARTICULATED WOOD HESSIAN CAVALRYMAN ON HORSEBACK, late 19<sup>th</sup> Century.** *Ex-collection:* Bernard Barenholtz, Sold Sotheby's January 1990. Height 7 ¾ in.



**265. AMERICAN CARVED PINE SCISSOR TOY OF MARCHING SOLDIERS, early 20<sup>th</sup> Century.** Height 4 in.



**266. AMERICAN FORTUNE TELLING WHEEL, late 19<sup>th</sup> Century,** with twenty-five hand written predictions, quips and rhymes. Diameter 18 in.



**268. AMERICAN WOOD POLYCHROME PUPPET HEAD ON STAND, early 20<sup>th</sup> Century.** Height 6 in.



**267. RARE AND UNUSUAL AMERICAN WOOD AND POLYCHROME SAND TOY, circa 1900,** with Pennsylvania hex decoration. Height 37 in. Width 23 in.

**269. PENNSYLVANIA HESSIAN WHIRLIGIG, mid 19<sup>th</sup> Century,** with forged arms and polychrome paint. Height 11 in.

**270. AMERICAN TOY FRAGMENT OF A MAN IN A TOP HAT WITH OUT-STRETCHED ARMS, early 20<sup>th</sup> Century.** Height 10 in.

**271. UNIQUE AMERICAN TABLE WITH ALLIGATORED BROWN PAINT, circa 1930.**



**272. NEW ENGLAND CARVED WOOD AND METAL POLYCHROME ARTICULATED BIRD ON STAND, early 20<sup>th</sup> Century.**

Height 21 in. Width 16 in.

**273. GROUP OF FOUR FOLK ART CARVED BIRDS IN POLYCHROME PAINT, early 20<sup>th</sup> Century, perched parakeet, bobbing duck, bobbing peacock, bobbing emu. Height of parakeet 12 in.**



**274. CARVED AND POLYCHROME DECORATED WOODEN EAGLE, early 20<sup>th</sup> Century. Height 9 in. Width 40 in.**