



116. HAROLD HORTON NEWSOM (AMERICAN 1889-1944) “Mission San Francisco de Solano”, oil on masonite, painted circa 1910-1920, signed lower right Harold H. Newsom, in period Art Nouveau frame. 44 ½ in. x 49 in. Newsom studied at the CCAC; exhibited at the California State Fair, 1930; The Oakland Art Gallery 1932 & 1939; Santa Cruz Art League 1938; GGIE 1939; Bay Region AA 1940. His father and uncle were architects of over 600 buildings in California.



117. PAIR OF CARVED WOOD DOLPHIN CORNICES, last quarter of the 19th Century, in original paint decoration. Height 24 ½ in. Length 50 in.



118. PHILADELPHIA WALNUT TALL CHEST, circa 1790, with faceted quarter columns, on ogee bracket feet. Height 66 ¼ in. Width 43 ¼ in. Depth 23 ½ in.



119. BOSTON MAHOGANY FLIP TOP GAME TABLE, circa 1825, carved standard, four saber legs ending in bronze paw casters. Height 29 in. Width 36 in. Depth 18 in.



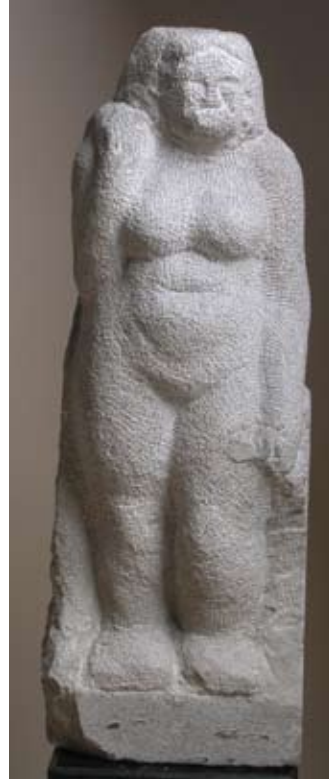
120. AMERICAN FLAT TOP HIGHBOY, circa 1720-1740, PENNSYLVANIA OR DELAWARE. Height 71 in. Width 40 in. Depth 22 in.



121. MAHOGANY THREE PEDESTAL DINING TABLE WITH TWO LEAVES, circa 1800, ebony and satin line inlay on top and legs. Two leaves 50 ½ in. x 22 ¼ in. Height 29 in. Width 50 ½ in. Length 99 ½ in. Total length with leaves 144 in.



122. TURN OF THE CENTURY HAND FORGED WROUGHT IRON BASKET OF FLOWERS ON STAND, attributed to Cruse Kemper Ironworks, Ambler, Pennsylvania. Height 42 in.



123. CARVED STONE FIGURE, attributed to William Edmonson (Nashville 1874-1951). Figure descended in original owner's family. Height 23 in.



124. CARVED STONE LAMB, attributed to William Edmonson (Nashville 1874-1951). Figure descended in original owner's family. Height 11 ½ in.



125. FINE CARVED AND PAINTED PINE 8 FIGURE ACROBATIC TOY, John Scholl, Germania, (Pennsylvania 1827-1916), circa 1900. Acrobats wearing blue and black costumes with black bowler hats, the figures go through their paces when hand crank is turned, all mounted on a blue and white scalloped base. Height 16 in. Width 14 $\frac{3}{4}$ in.

John Scholl was carpenter by trade. He was born in Wurtenburg, Germany in 1827. He came to America in 1853 settling in the forest region of Germania, Pennsylvania. At the age of 80 he began his wood carvings. Carvings by Scholl are featured in the collections of the Whitney Museum of American Art, The William Penn Memorial Art Museum, Harrisburg, Pennsylvania, The Fenimore House, Cooperstown, New York, and the Museum of American Folk Art, New York. *Provenance:* Midwolf Collection, sold Sotheby's Sale #6350 October 1992, lot 158.

Excerpted from Adele Earnst Folk Art in America, a Personal View



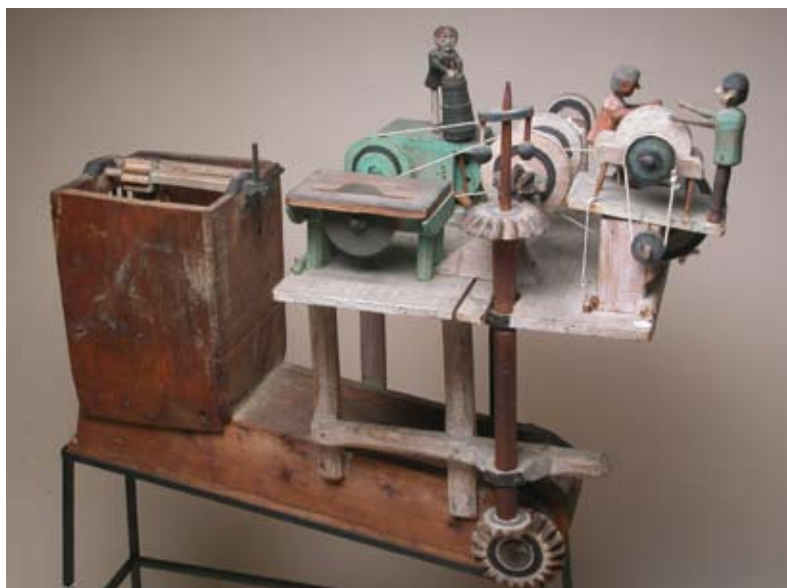
126. ARTICULATED SET OF SQUARE DANCERS, late 19th Century, polychrome painted surface. *Illustrated: American Antique Toys. Ex-collection: Bernard Barenholtz, Sold Sotheby's, January 1990. Height 13 ½ in.*



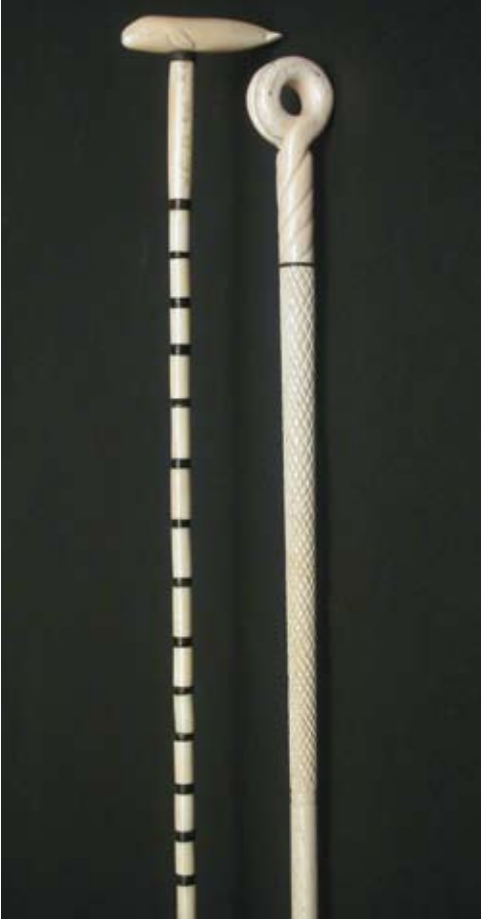
127. RARE AND UNUSUAL POLYCHROMED WOOD AND METAL WHIRLIGIG OF TWO HORSES ON HORIZONTAL PLANE, circa 1920-30. Height 17 in. Length 32 in.



128. ARTICULATED TOY WITH FIVE MEN AND TWO DOGS, late 19th Century, original polychrome surface. *Ex-collection:* Stephen Score. Height 15 in. Width 19 in. Depth 11 ½ in.



129. AMERICAN WOOD, WIRE AND STRING WATER TOY, circa 1920, with original polychrome paint decoration. Height 28 in. *Ex-Collection:* Pick Richardson, Reynoldsburg, Ohio, found in Maine. *Provenance:* Garth's Auction Sold April 1979, lot 157.



130. WHALE IVORY AND BALEEN CANE, early 19th Century, the grip a full bodied whale of ivory, atop a shaft of 72 interval sections of turned ivory and baleen ending with a turned whalebone ferrule, 45 baleen rings, 27 ivory turned sections.

131. WHALE IVORY AND WHALEBONE WALKING STICK, circa 1860, the grip carved from a single tooth, double rings into a twist on a hatch carved tapering whalebone shaft.

132. WHALE IVORY PIE CRIMPER, circa 1850, the heart and architectural shaped handle carved of a single tooth with a large zigzag wheel. Length 7 ½ in.

133. WHALE IVORY PIE CRIMPER, circa 1860, pistol grip handle graduating to deeply carved sections with silver and baleen spacers, four prong fork and solid zigzag wheel. Length 9 in.



134. SCRIMSHAW WHALE TOOTH, circa 1860, polychrome $\frac{3}{4}$ portrait of a lady. Height 6 $\frac{1}{4}$ in.

135. SCRIMSHAW WHALE TOOTH, circa 1860, almost full portrait of a standing young lady with her dress pulled up, the reverse with two clipper ships on water. Height 6 $\frac{1}{2}$ in.



136. WALKING STICK, 19th Century, carved ivory knob depicting nude acrobat and tumbler.



137. **HANDMADE HERIZ CARPET**, circa 1930's. 12 ft. 4 in. x 9 ft. 6 in.



138. **CHINA TRADE OIL** "*Portrait of the American Merchant Brig Cadet*", circa 1870, oil on artist's board, in period black painted and gilt frame. 15 ½ in. x 22 in.