



139. HAND PAINTED TOLE TRAY, 18th Century, with oval cartouche and silver plated gallery rim and handles. 26 ½ in. x 21 in.



140. FINE POLYCHROMED SCRIMSHAW WHALE TOOTH, circa 1860, full portrait of a lady in an elaborate gown, the reverse depicting a woodsman choking an eagle in combat. Length 6 in.



141. MAURICE HERAULT (FRENCH 1924-2004) “Haystacks”, oil on board, signed lower left. 15 in. x 18 in. Herauld, a French “fauve” painter exhibited at the Salon des Independents; was a student and friend of Andre Chote whose cubistic style he adopted; he is represented in the Ovar Museum in Portugal. *Provenance:* Estate of the Painter



142. ASSEMBLED SET OF EIGHT ENGLISH WHEEL AND BRACE-BACK WINDSOR CHAIRS, 19th Century.



143. GORDON HOPE GRANT (AMERICAN 1875-1962) "Portrait of a Clipper Ship at Sea", oil on canvas, signed lower left Gordon Grant, 1954. 23 in. x 29 in.



144. COPELAND SPODE DINNER SERVICE, circa 1830, comprising thirty-four 9 ¾" dinner plates, thirteen 8 ¼" plates, fourteen 8" plates, ten 9 ¾" soup bowls, large soup tureen with cover and underplate, three sauce tureens with covers and underplates, two rectangular open vegetable bowls 11 ½" x 8 ½", four rectangular platters 10 ½" x 7 ½", rectangular open vegetable bowl 9 ½" x 6 ½", two diamond shaped sauce tureens with covers and one underplate.



145. VINCENZ GORGON (AUSTRIAN 1891-1961) "Village Scene", gouache and pastel on artist's board, signed lower right V. Gorgon, 1919. 19 ½ in. x 26 ¼ in.



146. AMERICAN FEDERAL MAHOGANY PETITE SIDBOARD, bowed cross banded top above a conforming case of cock-beaded drawers and cupboard with reeded stiles and fluted legs. Height 42 in. Width 54 in. Depth 24 ½ in.

147. PAIR OF BOSTON BRASS ANDIRONS, circa 1800. Height 17 in.



148. MARITIME THEME STERLING SILVER TANKARD, in the form of a metal bound cask with applied anchors, crossed oars and boat hooks, braided rope swag, and braided rope handle. Made by an artist just before joining Gorham Co., a firm which specialized in this type of silversmithing. Height 9 ½ in.

149. DANIEL MUNROE (Concord and Boston, Mass. 1775-1859) MAHOGANY ROXBURY TALL CASE CLOCK, circa 1808, line inlay, brass stop fluting and capitals, fretwork bonnet, decorated and signed face. Munroe apprenticed to Simon Willard for seven years. Height 95 in.



**150. AMERICAN CAST IRON
FACE TRADE SIGN.**
Height 16 in.



**151. CARVED SANDSTONE HEAD,
TENNESSEE, late 19th Century.**
*Exhibited: Westmoreland Museum
of Art, "A Sampler of Folk Art from
Pennsylvania Collections".*
Height 9 ½ in.



152. RARE PAIR OF AMERICAN MULTI-COLOR GLASS WITCH BALLS, mid 19th Century, with matching stands.

153. RARE AMERICAN GLASS MULTI-COLOR GLASS WITCH BALL ON STAND, NEW JERSEY, mid 19th Century, these balls were used to keep bad spirits away from houses.

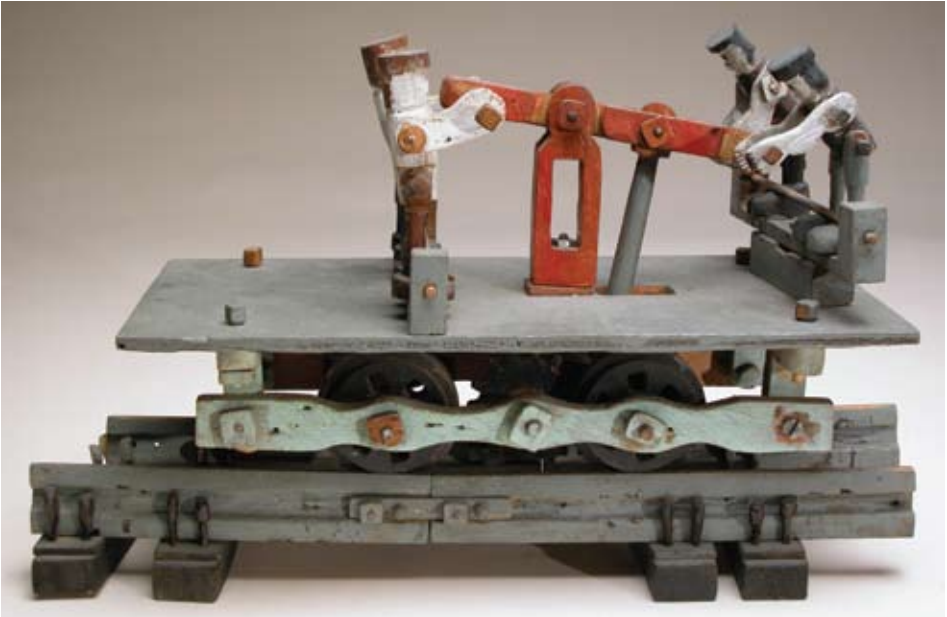


154. AMERICAN CARVED WOOD CARNIVAL HEAD IN WHITE PAINT, early 20th Century. Height 13 in.

155. AMERICAN CARVED WOOD CARNIVAL HEAD, early 20th Century, with traces of original paint. Height 14 in.



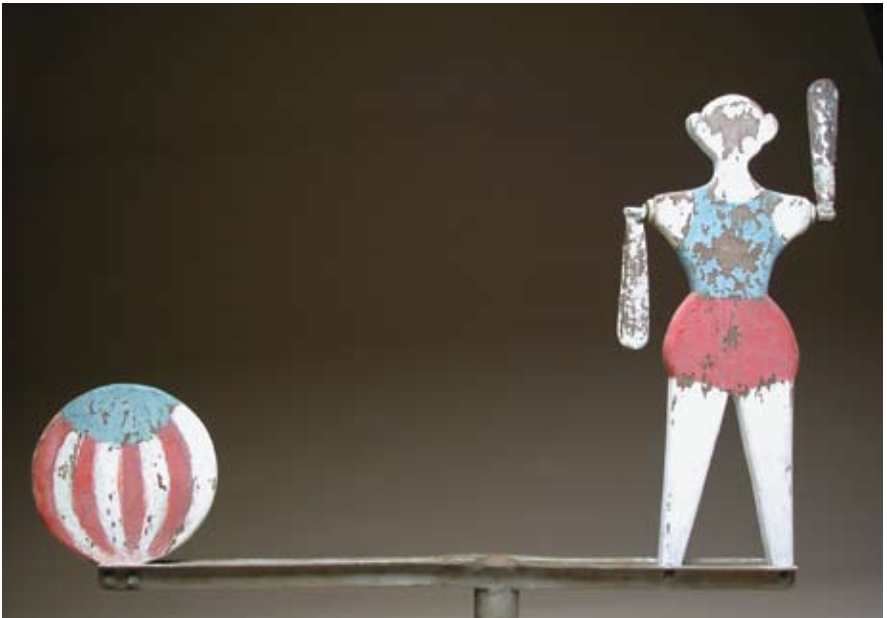
156. WOOD AND POLYCHROME MECHANICAL PUGILIST TOY, circa 1920. Height 18 in. *Provenance:* Barbara Johnson Collection. Together with three other pugilist toys.



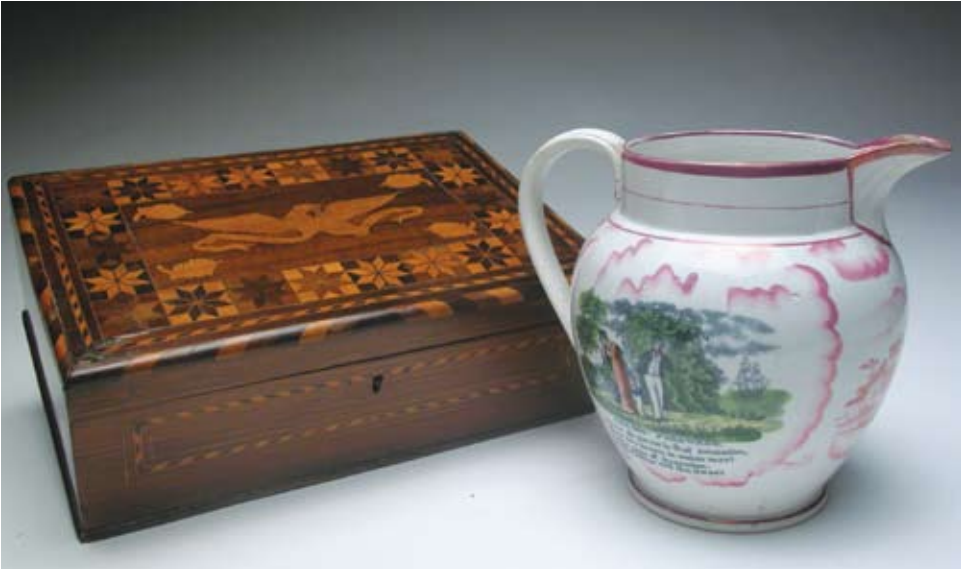
157. AMERICAN WOOD AND POLYCHROME RAILROAD PUMP ENGINE TOY, circa 1920. Height 8 in. Width 14 in. Depth 6 in.



158. ARTICULATED WOOD AND WIRE CIRCUS, circa 1920, with acrobats that swing, an elephant that nods, the lion tamer cracks a whip, the clown waves, horse acrobats ride, the ringmaster announces. Marked Richmondville, New York. Featured on PBS Television *"Find"*. Height 30 in. Width 29 in. Depth 11 in.



159. CARVED WOOD FEMALE AND BEACH BALL WHIRLIGIG, early 20th Century, with original paint decoration. Height 17 in. Width 26 in.



160. FINE INLAID GENTLEMAN'S BOX, circa 1820, contrasting tropical woods of cherry, mahogany rosewood and satinwood. 4 ¼ in. x 12 ½ in. x 8 ½ in.

161. SUTHERLAND PINK LUSTRE PITCHER, 19th Century, depicting the Sailor's Farewell and English and French Union. Height 7 ½ in.



162. ENGLISH REGENCY MAHOGANY ROUND DINING TABLE, 19th Century, Height 29 ½ in. Diameter 50 ½ in.