



**163. GEORGE P. ORR (AMERICAN 20TH CENTURY) “Gloucester Harbor, 1949”**, oil on canvas, signed and dated lower right, in 22k gold leaf frame. 15 ½ in. x 19 ½ in.



**164. AMERICAN SHERATON CHEST OF DRAWERS**, circa 1820, cherry, bird's-eye-maple and mahogany bow front chest with three-quarter outset reeded front legs and half-round reeded rear legs, cock-beaded drawers with thistle reposed brass pulls and escutcheons. Height 39 ½ in. Width 47 ½ in. Depth 22 in.



**165. RARE LINCOLN COUNTY WITCH WHIRLIGIG.** Height 15 in.



**166. SHEET METAL WEATHERVANE OF A PEG LEG SAILOR WITH SPYGLASS, late 19<sup>th</sup> Century,** polychrome decoration. Height 36 in.  
*Provenance:* Jackie Radwin, Texas.

**166A. SHEET METAL SEAL TRADE SIGN, circa 1930.** Height 40 in.



**167. ARTICULATED FIGURES WITH SAW, turn of the Century, polychrome paint on wood, found in New York. Height 20 in. Width 30 in.**



**168. WOOD AND POLYCHROME WHIRLIGIG FRAGMENT OF WOMAN CHURNING BUTTER, turn of the Century. Height 12 in. Width 32 in.**  
*Illustrated: Country Home Magazine, April 1998.*



169. CARVED PINE FIDDLER TRADE SIGN, mid 19<sup>th</sup> Century. Height 36 in.



**170. PAIR OF SCARCE BLACK FOREST HALL TREES, last quarter of the 19<sup>th</sup> Century, depicting seated dogs in a rock formation in front of a tree.**  
Height 6 ft. Width 34 in.

**171. UNUSUAL SIZE AMERICAN COMB-BACK WINDSOR LADY'S ARMCHAIR, circa 1770.**  
Seat Height 18 in.



**172. JAMES WALTER FOLGER (NANTUCKET 1851-1918) "Old Mill",** oil on canvas, signed lower left Jas. Walter Folger, 1888, in original frame and stretcher which is documented in paint "Old Mill built in 1746, Painted by Jas. Walter Folger, 1888 – Nantucket Mass." 16 in. x 20 in.

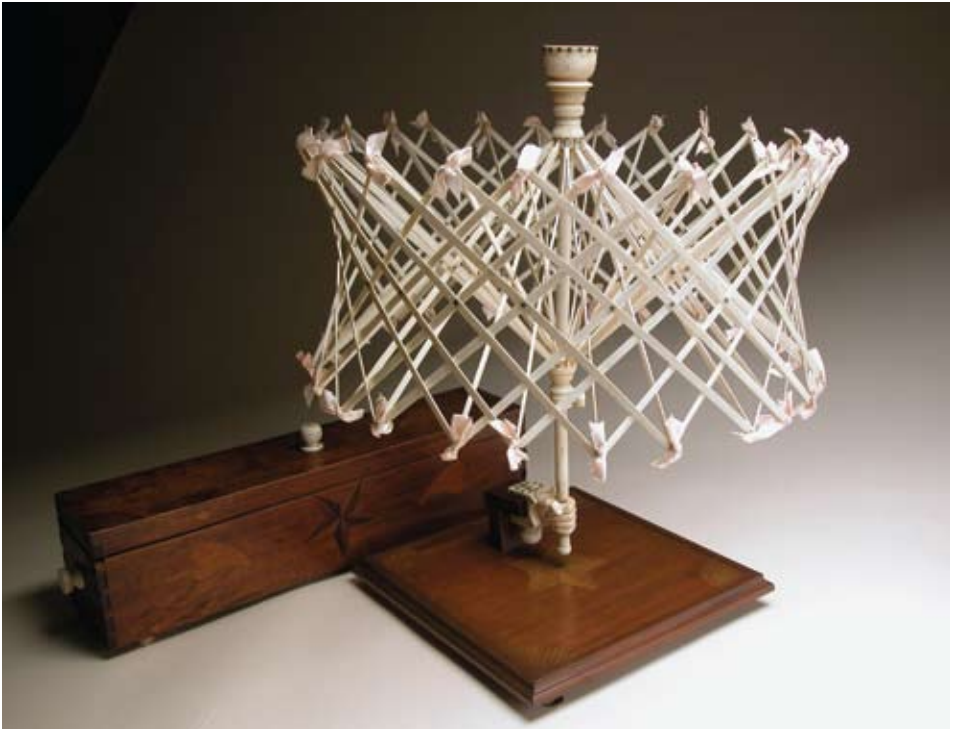


**173. RARE NANTUCKET SINGLE HANDLE BUSHEL HARVEST BASKET, circa 1890, branded "G.C. Gardner".** Height 13 in. Diameter 21 in.

**174. R. FOLGER SIGNED NANTUCKET RATTAN SWING HANDLE BASKET, circa 1885,** carved wood ear staves, unusual large size for a Folger basket, stenciled signed "*R. Folger Maker, Nantucket, Mass.*". Height 9 ½ in. Diameter 14 in.

**175. AMERICAN COMB-BACK WINDSOR ARMCHAIR, circa 1770,** good carved ears and outward ramp with scrolled arms, good turnings on legs and arm supports. Seat Height 18 in.





**176. WHALE IVORY AND WHALEBONE SWIFT, circa 1850**, large double cage with unique cloth pin rib construction on a bone shaft, grasped by a fine carved ivory hand with silver studs and initials E.T.B. Accompanied by original heart and star inlaid dovetailed box with scribed ivory feet, knobs, also with a contemporary stand inlaid with star and quarter corners. Height 22 in. Box Height 6 in. Length 24 in. Depth 5 in.



**177. RUSSIAN TEA CADDY, circa 1800**, filigree cut bone panels of urns and foliage, figures, weapons, flags, shield and helmet; the interior with carved bone cover. Height 3 ¾ in. Length 7 ½ in. Depth 4 in.



**178. SCRIMSHAW WHALE TOOTH, 19<sup>th</sup> Century**, engraved with an elegant Victorian woman surrounded by vines, the reverse with flowers, possibly engraved by N.S. Finney. Height 6 in.

**179. WHALE IVORY AND WHALEBONE INLAID WALKING STICK, circa 1850**, the grip carved from a single tooth of a hand with shirt cuff and button clutching a ball above rosewood and baleen inlaid dot and spikes, on a reeded tapering whalebone shaft.

**180. RARE WHALE IVORY AND WHALEBONE CAPTAIN'S WIFE INLAID WALKING STICK, circa 1850**, the grip a clenched fist with a tilt, carved from a single tooth, mounted on a paneled bone section inlaid with abalone, diamonds and bars with baleen spacer and turned tapering bone shaft.



181. RALPH CAHOON (AMERICAN 1910-1992) "CELEBRATING THE ARRIVAL OF THE HERO", oil on masonite, signed lower right R. Cahoon. 30 in. x 42 in.