



143. GILT LION HEAD CARVING, 19th Century. 10 in. x 10 in., depth of carving 4 in.



144. CARVED AND PAINTED MARITIME PLAQUE, made by Charles A. Burr, First Mate on the "*Montazuma*." 12 ½ in. x 20 in.



145. ENGLISH SCHOOL OIL ON CANVAS “*The Contented Farmer*”, mid 19th Century, in gilt frame. 18 ½ in. x 24 in. **Provenance:** Paul Winsor Antiques, Woodbury, Connecticut



146. SET OF EIGHT ENGLISH WHEEL BACK WINDSOR DINING CHAIRS, 19th Century.



147. OIL ON PANEL “Political Pig Pen”, late 18th Century. 10 ½ in. x 15 ¼ in.
Provenance: Judy King-Thomasson, Houston, Texas



148. ITALIAN INLAID COMMODE, 18th Century, with double urn inlaid top above three step-back and cross banded drawers. Height 34 in. Width 51 ½ in. Depth 22 ½ in.



149. CHARLES COBELLE (CONNECTICUT/FRANCE 1902-1994) “Nantucket’s Steamboat Wharf”, oil on canvas, signed lower right Cobelle. 20 in. x 24 in.



150. CARVED WHALE IVORY PIE CRIMPER, circa 1860, the grip with an open diamond and articulated hanging ring, the solid zigzag wheel supported by a series of 5 scrolls with a 3 prong fork. Length 9 ½ in.



151. JOHN EGLE (AMERICAN 20TH CENTURY) “*Lily Pond in Winter*”, oil on canvas, signed lower right John Egle and on reverse: “*John Egle at the Age of 95 and 10 Months, January 1982*”. 24 in. x 30 in.



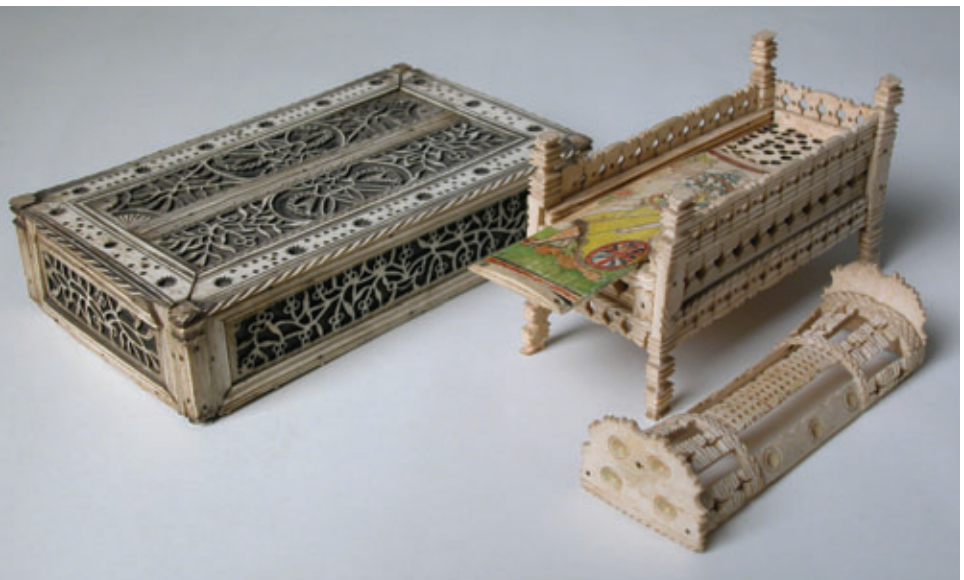
152. NAPOLEONIC P.O.W. PLAYING CARD BONE BOX, circa 1800, contains 45 bone playing cards and 28 bone dominoes in rectangular bone box on wooden structure, cribbage side rails, swag curtain skirt, peak shaped sliding lid, 14 panels with bone plate frames containing watercolors on paper depicting outdoor rural scenes and people. 3 5/8 in. x 3 1/4 in. x 9 1/2 in.



153. NAPOLEONIC P.O.W. DOMINO BONE BOX, circa 1800-1810, contains 54 bone dominoes and two die in rectangular bone box on wooden structure, overhanging cribbage side rails, swag curtain skirt, carved finials and feet, domed hinged lid with open work rosette of clubs and hearts flanked by wavy open work and yellow/green incised dots. 1 7/8 in. x 9 in. x 3 in.

154. NAPOLEONIC P.O.W. DOMINO BONE BOX, circa 1800-1810, contains 22 bone dominoes and one die in rectangular bone box on wooden structure, overhanging cribbage side rails, swag curtain skirt, carved finials and feet, domed hinged lid with open work rosette of clubs and hearts flanked by wavy open work and yellow/green incised dots. 1 7/8 in. x 9 in. x 3 in.

155. NAPOLEONIC P.O.W. DOMINO BONE BOX, circa 1800, contains 36 bone domino and 2 die, slide cover with kissing birds over a heart and running dog flanked by cribbage panels.



156. NAPOLEONIC P.O.W. BONE BOX, circa 1800, contains 45 bone dominoes in flat, wide box on wooden structure with sliding flat lid, detailed ornamental work on top and sides, interior divided into two compartments covered with red paper. 4 ½ in. x 2 in. x 7 ¾ in.

157. NAPOLEONIC P.O.W. DOMINO BONE BOX, circa 1800-1810, contains 49 bone dominoes in rectangular bone box on wooden structure, carved finials and feet, overall open work design, dome-shaped sliding lid with center cribbage board, open work and incised dots; polychrome flat inner sliding lid depicts image of Britannia, Queen of the Sea, holding a trident with British shield at her side while two winged angels clasp a wreathed halo over her head. 3 ½ in. x 5 ¾ in. x 2 ½ in.



158. NAPOLEONIC P.O.W. BONE BOX, circa 1800, contains 55 bone dominoes in rectangular bone box on wooden structure, cribbage side rails, swag curtain skirt, peak shaped sliding lid, and twelve watercolor panels with rural scenes and portraits. 3 ⅝ in. x 3 ¼ in. x 9 ½ in.

159. NAPOLEONIC P.O.W. DOMINO BONE BOX, circa 1800, contains 53 bone dominoes in rectangular bone box on wooden structure, cribbage side rails, swag curtain skirt, peak shaped sliding lid, fourteen panels with bone plate frames containing watercolors on paper under original glass depicting outdoor rural scenes, people and flowers. Lacks one foot. 3 ¾ in. x 3 ½ in. x 9 in.

160. NAPOLEONIC P.O.W. DOMINO BONE BOX, circa 1800-1810, contains 36 bone dominos in rectangular bone box with two inner compartments on wooden structure, carved acorn finials and carved feet, box decorated by rather coarse arrangement of dots, half circles and hash marks, flat sliding lid decorated in open work with central design and two end pieces, underlain by incomplete metallic gold paper. Signature on reverse of lid "*W. Kindred given by L. Baldry*". 2 in. x 6 ½ in. x 2 ⅝ in.



161. NAPOLEONIC P.O.W. DOMINO BONE BOX, circa 1800-1810, contains 54 bone dominos and three pegs in rectangular bone box with two inner compartments on wooden structure, overhanging cribbage side rails, swag skirt, carved finials and feet, domed hinged lid with pair of concentric circles interwoven with incised dots in green, red and black; polychrome flat inner sliding lid with incised angular handle depicts an elegantly attired woman, on reverse is later view of the woman nude. 2 ½ in. x 6 in. x 3 ¼ in.

162. NAPOLEONIC P.O.W. DOMINO BONE AND STRAW-WORK BOX, circa 1800-1810, contains 36 yellow-dot bone dominos in compact rectangular box with unusual bone and straw-work combination, bone frames decorated with alternating series of black dots and red cross marks, flat top sliding lid adorned in open work of repeating triangles intermixed with red dots, blue parallel edges, and cribbage rails, illegible markings on bottom of box. 1 ½ in. x 5 ⅝ in. x 1 ¾ in.

163. NAPOLEONIC P.O.W. DOMINO BONE BOX, circa 1800, contains 36 black dot dominoes with red incised line running across each domino, box decorated with polychrome designs on all sides, flat sliding polychrome lid depicting a woman in full length empire gown with chest ties. She wears a round headdress and stands beneath pulled drapes topped by an outdoor rural scene. ⅞ in. x 5 ⅞ in. x 1 ⅜ in.



164. CARVED WALRUS IVORY CANE, circa 1870, deep carving of a fox's head with glass eyes clutching a vine of grapes and leaves, a gold grape and leaf engraved collar inscribed *Frank to Theophile*, on a tapering ebony shaft.

165. FINE CARVED WHALE IVORY AND WHALEBONE WALKING STICK, circa 1850, large carved ivory Turk's turban knob walking stick with a single baleen spacer to a tapering whalebone shaft of deep crosshatch carvings atop reeded twist ending in a plain ferrule. Length 32 in.



166. WHALE IVORY AND WOOD WALKING STICK, circa 1860, large turned ivory knob with abalone disk mounted on six sections of tropical wood and ivory on a tapering ebony shaft.

167. CARVED WHALE IVORY, EBONY AND WOOD WALKING STICK, circa 1870, ivory hand with pleated cuff holding a ball on whale ivory and ebony spacers, on a tropical wood shaft.

168. MAMMOTH IVORY AND WHALEBONE CANE, circa 1860, banded barrel form grip on ivory and ebony rings on a tapering whalebone shaft.



169. THOMAS H. WILLIS (AMERICAN 1850-1925) "Portrait of an American Steam Yacht", oil and silk embroidery on canvas, the yacht with American flag, lighthouse and headland in the distance, unsigned. 17 ½ in. x 29 ½ in.



170. ENGLISH CHARLES II STYLE OAK WAINSCOTT ARMCHAIR, mid 19th Century, carved throughout depicting the Battle of Nasery, and Portraits of King Henry V & Queen Catherine. Height 64 in.

171. EUROPEAN CARVED WOOD AND GESSO PAINTED FIGURE OF SAINT ANTHONY, 19th Century. Height 34 in. Provenance: J.H. Armer, Scottsdale, Arizona

172. ENGLISH OAK BIBLE BOX, 18th Century, on 19th Century block and turned leg stand. Height 32 in. Width 27 ½ in. Depth 14 in.